

El Paso County Sheriff's Office Research and Analysis Section



**2008
Crime Summary**

This page intentionally left blank

Table of Contents

Introduction.....	4
Calls for Service.....	5
Part One Crime Comparison.....	8
Violent Crimes.....	9
Murder.....	9
Forcible Rape.....	10
Robbery:.....	12
Assault.....	16
Crimes Against Property.....	19
Burglary:.....	19
Larceny:.....	24
Motor Vehicle Theft:.....	27
Arson.....	32
Part One Clearance Rate.....	34
Summary.....	34

Introduction

This report is being submitted to provide a review of major trends and to explore changes in our county from year to year. Two types of data will be examined within this publication. Calls for service are calls of any type that were responded to by a El Paso County Sheriff's Office Deputy. These include dispatched calls which originate through the Sheriff's Communication Office or the 911 Call Center, and self-initiated activity generated by the units in the field. The Tiburon Computer Aided Dispatch (CAD) system is the source for this data.

The second type of data is crime classified according to the Federal Bureau of Investigation's Uniform Crime Report (UCR) standards. Our Intergraph Records Management System (RMS) is the source of the data. Only the most serious crimes, identified as Part One Crimes, will be examined. Part One Crimes include:

1. Murder And Non-Negligent Manslaughter
2. Forcible Rape
3. Robbery
4. Aggravated Assault
5. Burglary
6. Larceny – Theft
7. Motor Vehicle Theft
8. Arson

The source for the "UCR Part One Crime" case count is our Criminal Records and Forensics Section (CREFS). The RMS system is still not used for UCR reporting. The UCR tally is accomplished by manually logging cases into a journal. For this reason, I have not been able to match cases mentioned in this report to cases selected by CREFS clerks for inclusion in the UCR statistics. However, I will use the CREFS supplied UCR statistics for year to year comparison purposes only.

When crime type is changed for UCR reporting, the RMS is not corrected. As a result, I cannot guarantee that all crimes are included in a particular category. Any comparisons of trends within specific crime categories I make are based only on raw case data from the RMS system and do not reflect "Official" statistics.

Calls for Service

During 2008 there were 89,393 dispatched and self initiated calls for service where deputies of the Sheriff's Office responded. This number excludes administrative calls, such as court, distribution runs, special assignments, and non-law enforcement activity, like refueling the vehicles, school resource activity, and report writing. Civil process calls were also excluded. Prior years only included calls where a unit from the Patrol Bureau responded. This year the data was expanded to all SO units. This change was made due to the volume of calls handled by Linebacker and Border Star units. Because of the change, no year to year comparison will be made.

The top ten activities were:

Traffic Stops	38,332
Out Checking	5,468
Checking a Vehicle	3,921
Pick up Wanted Subject	3,500
Civil Problem	3,382
Checking a Suspect	3,233
911 Hang up	2,750
General Assistance	2,559
Vehicle Disturbing	1,634
Follow-ups	1,552

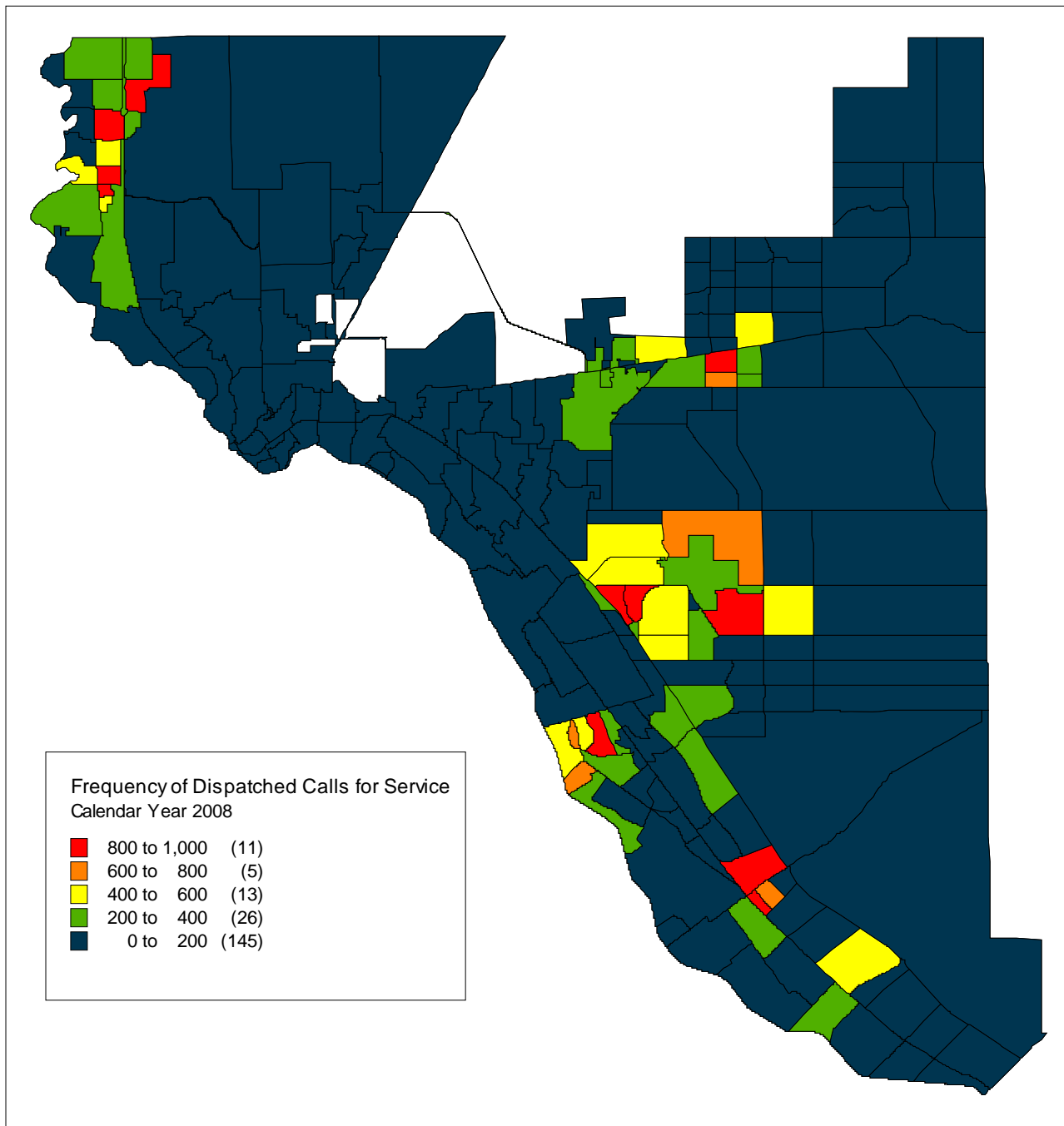
Of the citizen initiated calls for service, civil problems, 911 hangups, alarms, and vehicles disturbing generate the most incidents.

The top ten locations for number of calls for service were:

12501 Montana Av.	Montana Station	659
436 E. Vinton Rd.	Vinton Station	557
4815 Alameda Av.	R. E. Thomason General Hospital	388
6900 Delta Dr.	Ascarate Park	362
1300 Horizon Bl.	Love's Truck Stop	328
1301 Horizon Bl.	Flying J Truck Stop	296
13900 Montana Av.	Exxon Station/Convenience Store	287
3850 Justice Dr.	Sheriff's Office Headquarters	281
6900 Doniphan Dr.	High Traffic Intersection	264
500 Talbot Av.	Gas Light Square Mobile Home Park	241

Two of the locations with the highest frequency of calls are the Montana Station and the Vinton Station. People coming to the stations for assistance rather than calling are responsible for the high volume. Civil problems are the most common walk-in calls at both stations, with 122 at Montana Station and 129 at Vinton Station. Two truck stops located at Gateway West and Horizon Bl. account for 624 calls. The majority of the calls are traffic stops with 125, followed by thefts with 71 and subject(s) disturbing with 47.

By removing the most common types of self-initiated calls, like units out checking, follow-ups, subject and vehicle checks, and traffic stops, the top ten addresses still include six from the original list. The Montana and Vinton patrol stations are present with Thomason Hospital, both truck stops, and the mobile home park. The most common calls at the truck stops are thefts, subject(s) disturbing, civil problems, and motor vehicle accidents. The most common calls at the hospital are protective custody orders and calls for general assistance. Civil problems are the top call at the mobile home park, followed by subject(s) disturbing.



This map shows the locations generating the highest numbers of dispatched calls. This does not include self-initiated or administrative call types.

This table shows calls for service by district. These are calls for service where a Sheriff's Office patrol unit responded and include administrative calls. This also shows time spent handling calls

Calls for Service Comparison Year 2008 to Year 2007

District	City of											Horizon		TOTAL	
	200	210	220	Anthony	El Paso	240	250	260	270	280	290	Clint	City		Socorro
2008 Calls	6764	4676	5671	662	13416	5090	7306	11956	7216	5312	7021	1142	2054	1955	80241
2007 Calls	6019	3868	4671	541	10613	6912	6928	11292	7109	6075	7312	1238	1967	2274	76819
% Change	12.38%	20.89%	21.41%	22.37%	26.41%	-26.36%	5.46%	5.88%	1.51%	-12.56%	-3.98%	-7.75%	4.42%	-14.03%	4.45%
2008 Hours Used	3270	1976	2499	527	8115	2462	4139	7307	4250	3033	3834	604	1125	1074	44215
2007 Hours Used	3213	1823	2110	425	7362	3221	3788	7049	4171	3135	3814	583	1122	948	42764
% Change	1.77%	8.39%	18.44%	24.00%	10.23%	-23.56%	9.27%	3.66%	1.89%	-3.25%	0.52%	3.60%	0.27%	13.29%	3.39%

Station Comparison

Station	Upper Valley	Lower Valley	TOTAL
2008 Calls	17773	49052	66825
2007 Calls	15099	51107	66206
% Change	17.71%	-4.02%	0.93%
2008 Hours Used	8272	27828	36100
2007 Hours Used	7571	27831	35402
% Change	9.26%	-0.01%	1.97%

NOTE: City of El Paso calls not included in station totals

Part One Crime Comparison

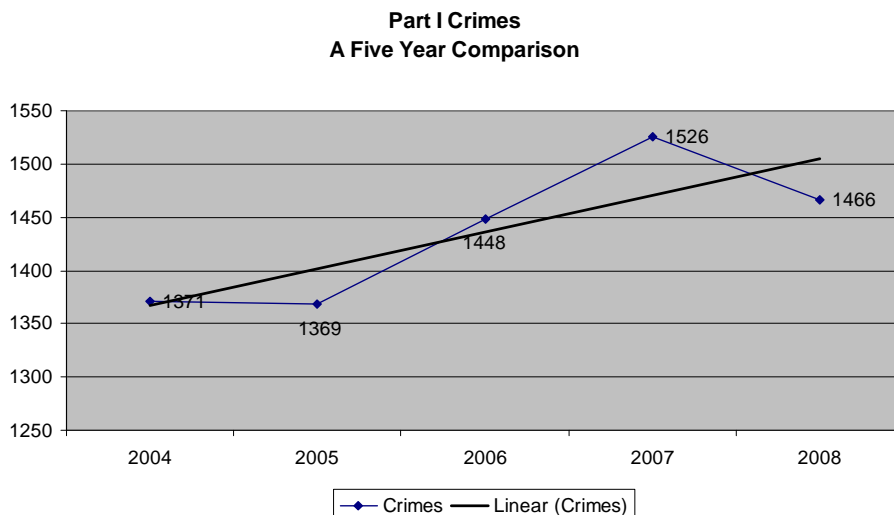
According to CREFS statistics, there were 1,466 Part One Crimes reported to the El Paso County Sheriff's Office in 2008. This is a 3.9% decrease over the 1,526 Part One crimes reported in 2007.

Due to lack of availability of specific detail in the reports furnished by CREFS, there is no further breakdown, such as case volume by district, possible. Hopefully, as the new RMS system becomes better utilized, information such as Part One Crimes by district will become available.

Below is a summary of the 2008 Part One Crimes (by offense type) reported to the Sheriff's Office with comparisons to 2007 totals.

Part One Crime Categories	2007	2008	Change
Homicide	3	2	(-) one case
Rape	18	27	(+) nine cases
Robbery	29	32	(+) three case
Agg Assault	173	162	(-) eleven cases
Violent Crime Total	223	223	No change
Burglary	362	294	(-) sixty-eight cases
Theft	807	735	(-) seventy-two cases
Motor Vehicle Theft	113	192	(+) seventy-nine cases
Arson	21	22	(+) one case
Property Crime Total	1,303	1,243	(-) 4.6%
Total Part One Crime	1,526	1,466	(-) 3.9%

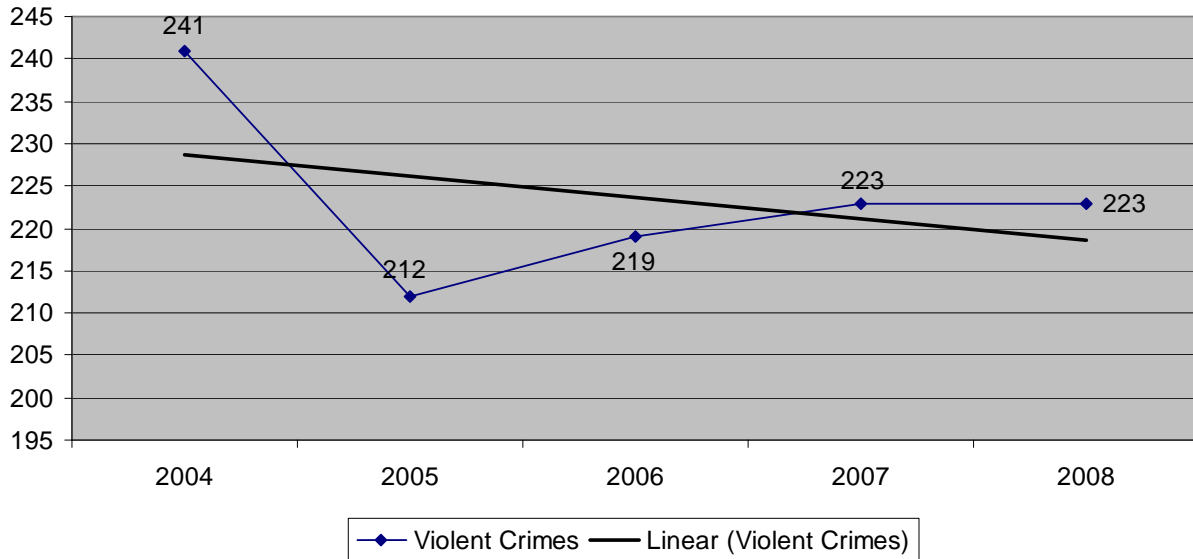
The below chart shows a five-year comparison of total part one crime. Included is a linear trend line showing the overall trend.



Violent Crimes

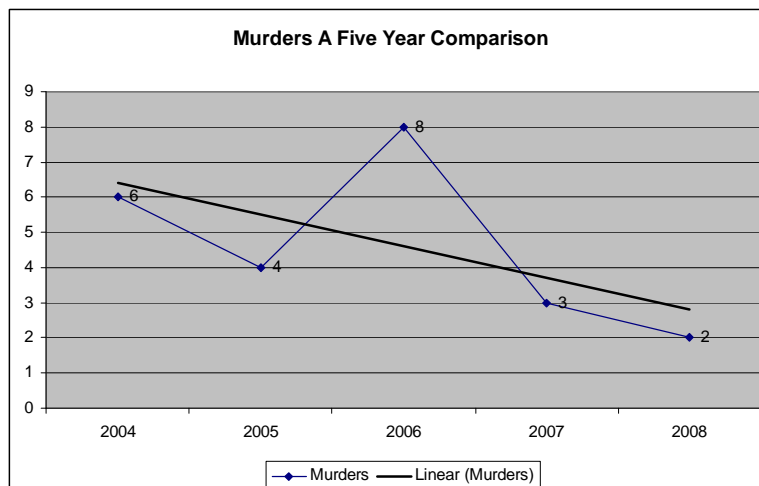
- Violent crimes are composed of four offenses: Homicide (murder and non-negligent manslaughter), Rape, Robbery, and Aggravated Assault. According to the Uniform Crime Reporting Program's definition, violent crime involves force or threat.
- In 2008 there were 223 violent crimes reported. This is no change from the 223 violent crimes reported in 2007. The five-year linear trend is in the decline.

**Part I Violent Crimes
A Five Year Comparison**



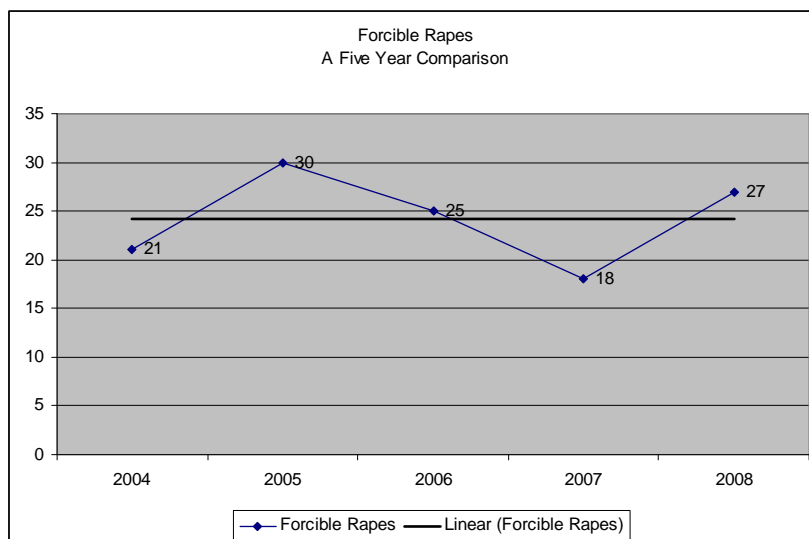
Murder: *The willful (non negligent) killing of one human being by another.*

There were two reported non-traffic homicides (murders/non-negligent manslaughters) in El Paso County during 2008. This is a drop from the three cases reported in 2007. The first offense was a murder/suicide family violence in which a 21 year old female was shot by her live-in boyfriend. The boyfriend later committed suicide when cornered by deputies. The second offense involved an eighteen year old male victim beaten with a baseball bat. The murder appeared to be related to long-standing problems among males in their late teens and early twenties.

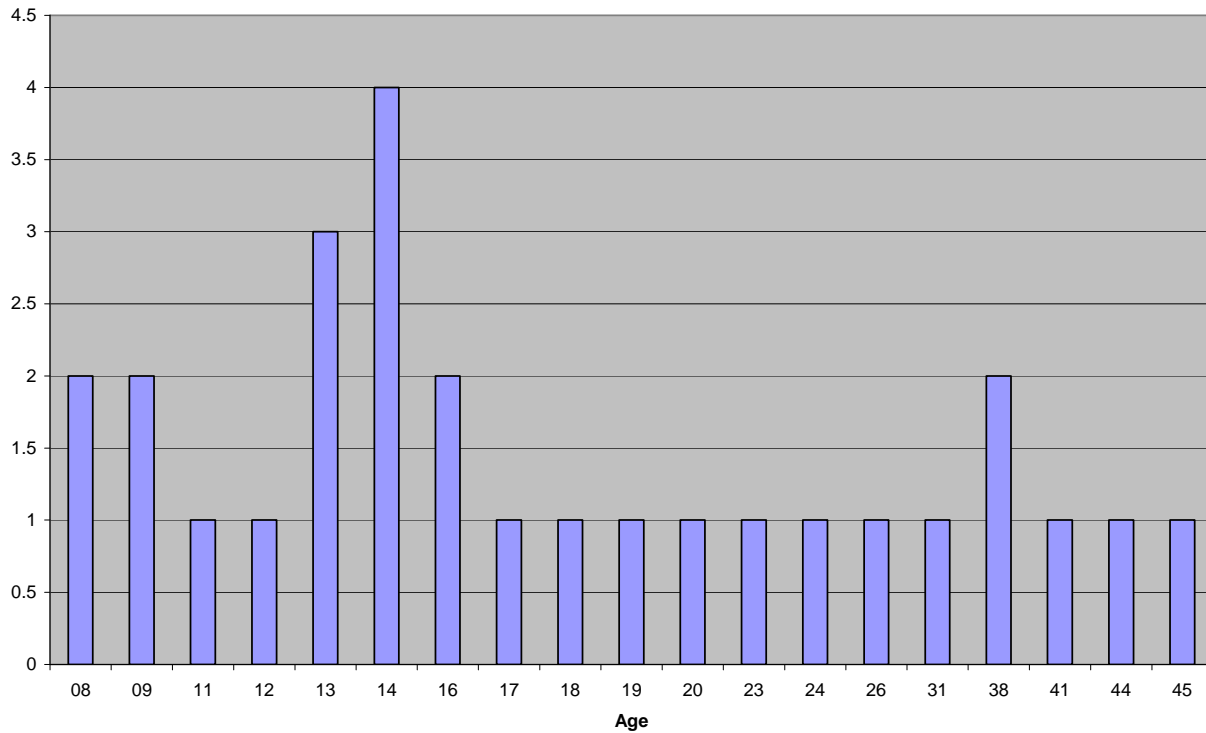


Forcible Rape: (Sexual Assault) *The carnal knowledge of a female forcibly and against her will. Assaults or attempts to commit rape by force or threat of force are also included; however, statutory rape (without force) and other sex offenses are excluded.*

Our UCR reports show there were twenty-seven forcible rapes reported in 2008. This is up nine cases from the eighteen reported in 2007. One case that was reported in 2008 as Indecency with a Child was learned in late December to be an Aggravated Sexual Assault. UCR will carry the case as a 2009 case, but since it occurred and was originally reported in 2008, it will be included in this analysis. Of the twenty-eight cases included in the analysis, one was an attempt, the rest were completed. The age range of the victim was between 8 to 45 years old with only one victim under ten years old. Twelve of the victims were 12 and 17 years old. Sixteen victims, or 57%, were under the age of 18. The one stranger rape involved a fifteen year old victim who accepted drugs from a stranger, then got in the vehicle with him. The victim struggled but the drugs incapacitated her. In nine of the reported cases the offender was a family member, and includes three cases in the same family with the same offender. Two other cases involved boyfriend/girlfriend. Five of the cases were counted after Socorro PD contacted SO detectives to investigate a sexual assault that occurred in the town of Socorro. Five incidents occurred in the San Elizario area and five incidents occurred in the Montana Vista area. There is no indication of any serial rapists operating in the area.



Age of Forcible Rape Victims



Area Where Forcible Rapes Occurred

Area	Number
MONTANA VISTA	5
SAN ELIZARIO	5
SOCORRO	5
CANUTILLO	4
HORIZON CITY	3
FABENS	2
CLINT	2
TORNILLO	1
SPARKS	1

Type Locations Where Sexual Assaults Occurred

Twenty-four of the twenty-eight cases occurred at private residences. One case each occurred at a park, at a church, in a vehicle parked on the roadway in front of the victim's house, and at a nightclub.

Robbery: *The taking or attempt to take anything of value from the care, custody, or control of a person or persons by force or threat of force or violence and/or by putting the victim in fear.*

There were thirty-two reported cases this year. This is up three cases from the twenty-nine robberies reported in 2007.

Of the thirty-two robberies, twenty-two were aggravated robberies and ten were robberies. Twenty-one of the aggravated robbery cases indicate a weapon was used or displayed, the twenty-second states the offender kept his hand behind his back as if he had a weapon. In one of the aggravated robberies and one of the robberies the offender(s) left without any property. Of all thirty-two cases, fourteen of the victims were businesses and eighteen were persons.

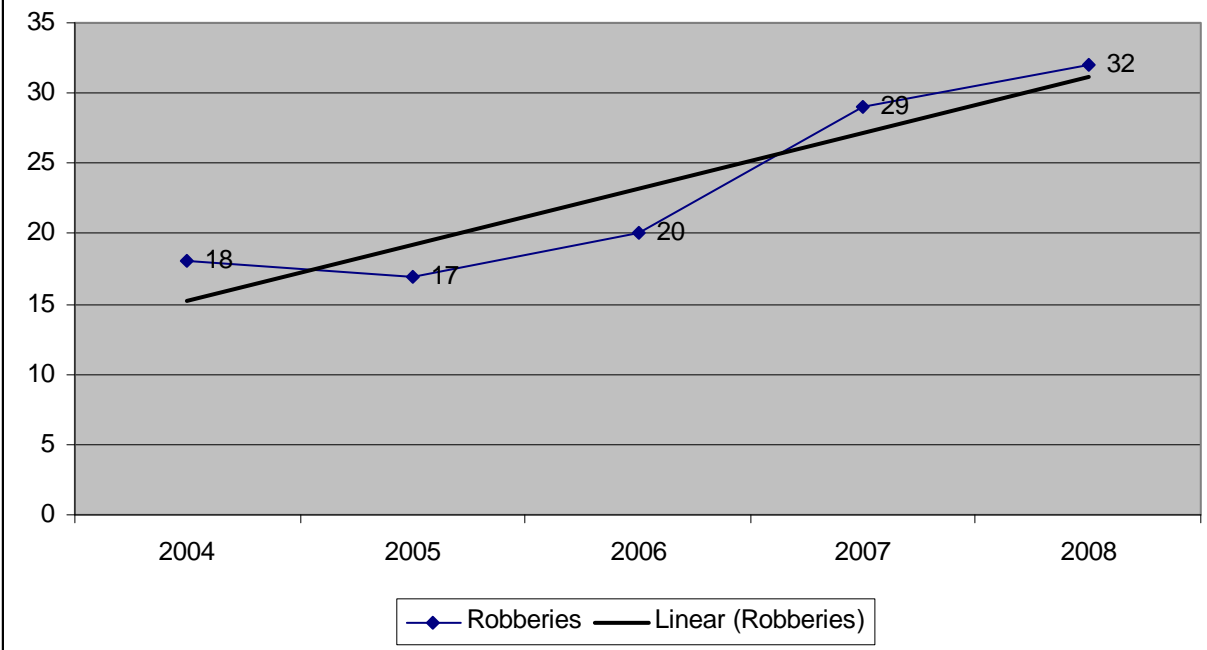
Of the business robberies:

- Two of the businesses were fireworks stands, one was a discount store, and one was a trucking company that was hit twice. The rest were convenience stores or gas stations. The trucking company reports both indicate that security guards were overpowered and duct taped while offenders took items from the office as they went through trailer invoices. Two separate security guards were victims, and it is possible the offenders were looking for specific cargos in the trailers.
- Eight aggravated robberies and one robbery involved offenders taking money by displaying or threatening to use a weapon. Five involved firearms, one involved gestures indicating a weapon was present. Three of the firearms were long barreled weapons, two were handguns.
- Handguns were also used in two other robberies where cash was not demanded. One was the first of the trucking company incidents, the second was the fireworks stand robbery where only the fireworks were taken.
- One of the fireworks stand cases states the offenders took fireworks after displaying a handgun, but stated they would return to pay for the fireworks when they got money.
- Two of the robberies were beer runs that escalated into robberies when offenders used force trying to escape. One of these was an aggravated robbery as the offender used his vehicle as a weapon to affect escape.

Of the robberies from persons:

- Five cases involved offenders known to the victims taking property during altercations with the victims. One of these was an aggravated robbery as a knife was used. Two cases involved the offenders taking the victims' cell phones.
- One was a purse snatching what escalated when the victim resisted.
- In one case, five victims were robbed at a bonfire by offenders armed with a shotgun.
- Three involved muggings of pedestrians as they walked down the street.
- Four other individuals were mugged as they were leaving businesses. In two of the cases the victim was mugged by an offender armed with a firearm as the victim was leaving a bar. In one case one individual leaving a bar offered several strangers a ride, and was then carjacked by the riders.
- One case involved several offenders trying to pull a con job on a traveler, then using their vehicle as a weapon to facilitate their escape.

Robberies A Five Year Comparison



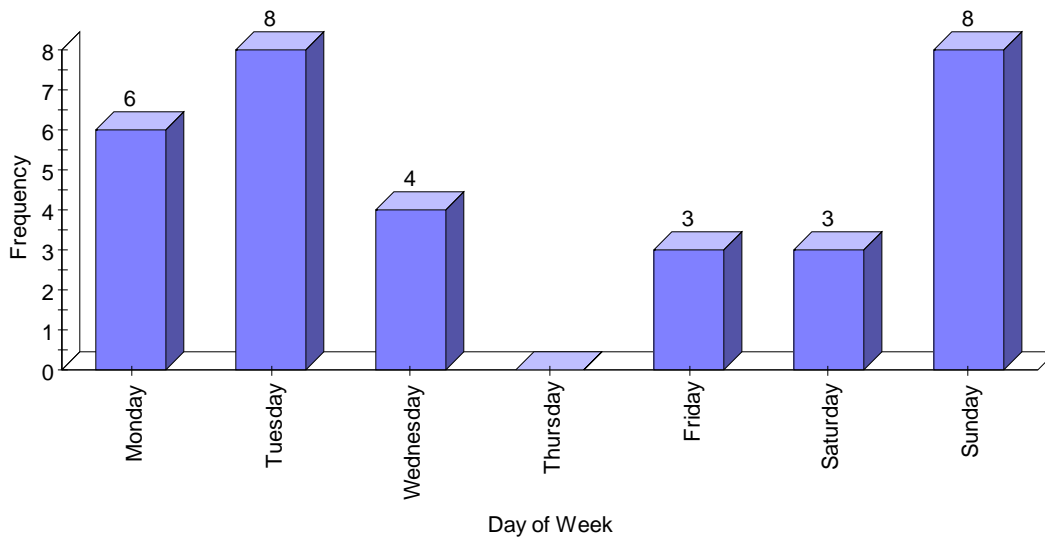
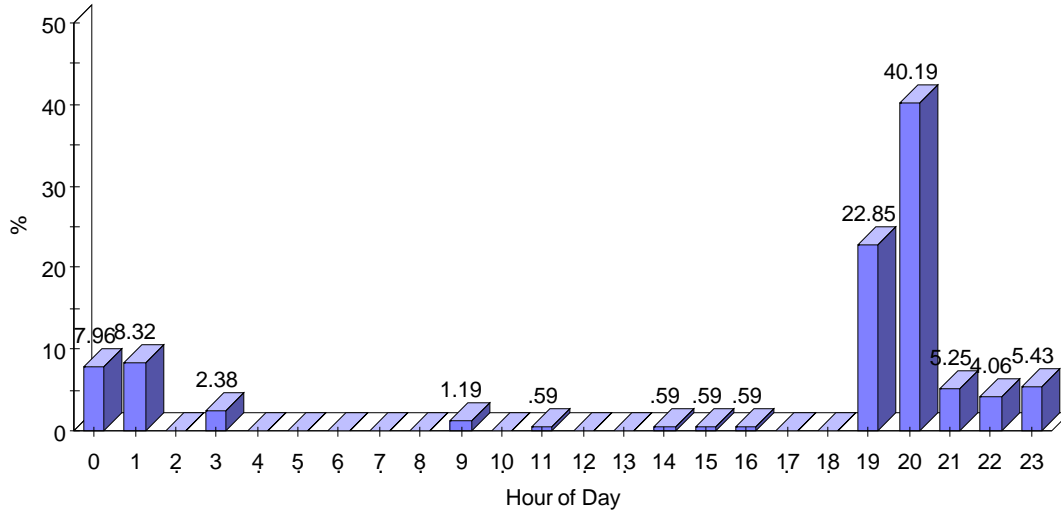
CHARGE	VICTIM TYPE	HANDGUN	RIFLE/ SHOTGUN	MOTOR VEHICLE (AS WEAPON)	KNIFE/CUTTING INSTRU (AX, ETC)	CLUB/ BLACKJACK/ BRASS KNUCKLES	PERSONAL WEAPONS (HANDS, ETC)	GRAND TOTAL
AGG ROBBERY	BUSINESS	5	3	1	1	2	1	13
	PERSON	3	3	1	2	0	0	9
AGG ROBBERY Total		8	6	2	3	2	1	22
ROBBERY	BUSINESS	0	0	0	0	0	1	1
	PERSON	0	0	0	0	0	9	9
ROBBERY Total		0	0	0	0	0	10	10
Grand Total		8	6	2	3	2	11	32

Area Where Robberies Occurred

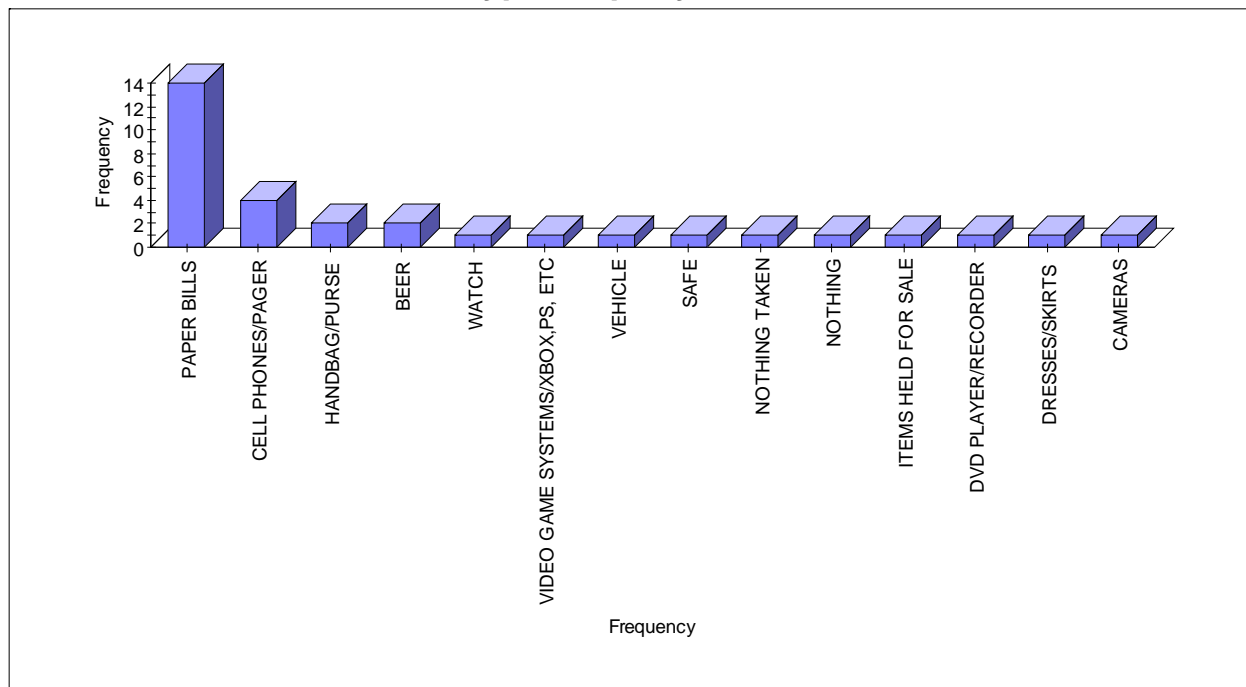
CITY	AGGRAVATED ROBBERY	ROBBERY	GRAND TOTAL
SAN ELIZARIO	5	2	7
CANUTILLO	2	3	5
CLINT	4	0	4
MONTANA VISTA	3	1	4
FABENS	2	2	4
HORIZON CITY	3	0	3
EL PASO	1	1	2
SOCORRO	1	1	2
VINTON	1	0	1
Grand Total	22	10	32

Time When Robberies Occurred

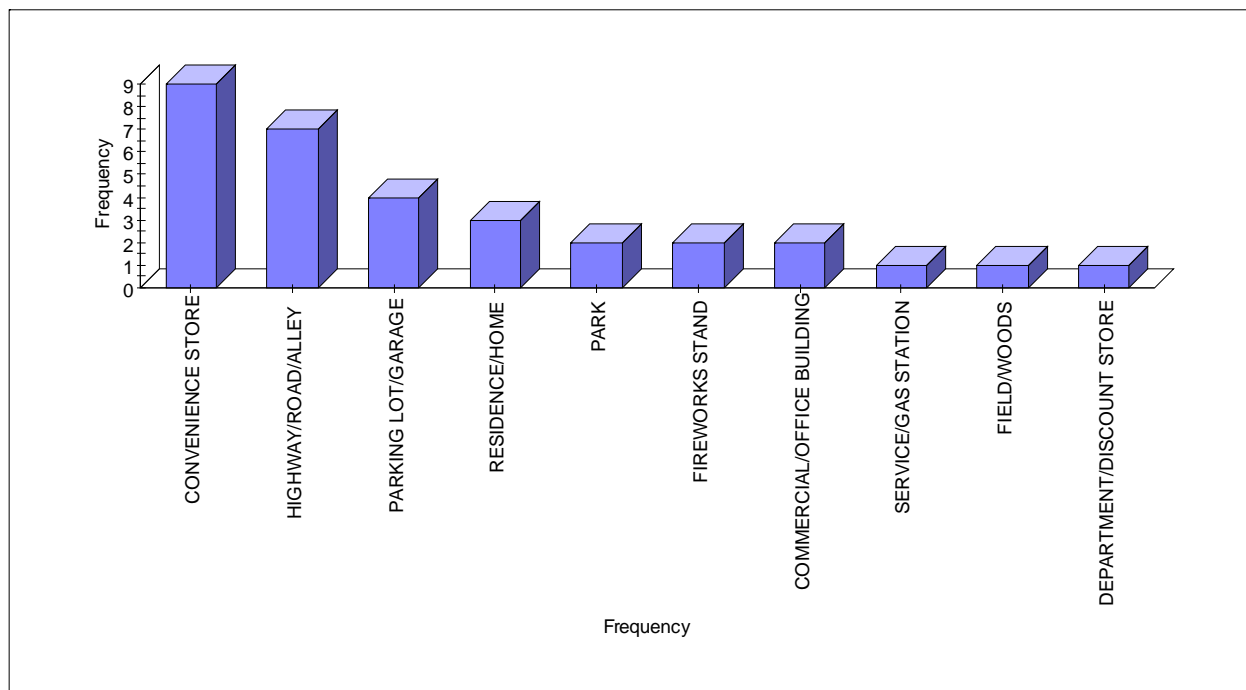
The greatest percentage of robberies occurred between 1900 and 0100 hours. Sunday and Tuesday were the most popular days with eight robberies each day. There six robberies on Monday four on Wednesday, and three each on Friday and Saturday. There were no robberies that occurred on Thursday



Type Property Taken

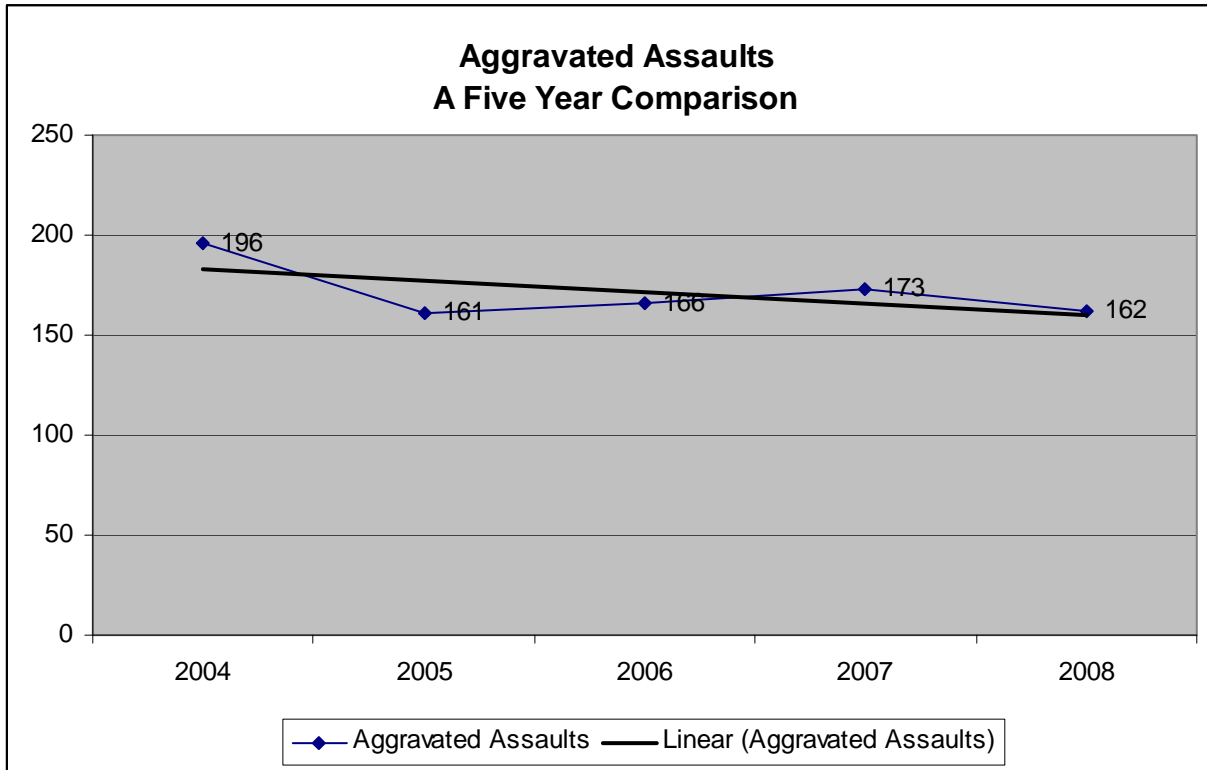


Type of Location



Assault: (Aggravated Assault) *The unlawful attack by one person upon another for the purpose of inflicting severe or aggravated bodily injury. (This type of assault is usually accompanied by the use of a weapon or by means likely to produce death or great bodily harm.)*

UCR statistics show aggravated assaults in 2008 were nine cases lower than 2007. The five year trend is also declining.



Due to the number of cases involved, and discrepancies with UCR coding and data entry, no effort was made to match RMS cases with UCR statistics for analysis purposes. The categories shown in the following comparisons are based strictly on the information entered in the reports. The information has only been audited for accuracy to the extent of filling in missing data. After filtering out cases obviously miscoded and unfounded cases, I was able to locate 159 cases bearing the UCR code of Aggravated Assault. Of those cases, fifty-four appear to be domestic violence related. Three incidents had three victims assaulted at the same time.

Charge	No. of cases
AGG ASSAULT W/DEADLY WEAPON	99
AGG ASSAULT DATE/FAMILY/HOUSE W/WEAPON	27
AGG ASSAULT CAUSES SERIOUS BODILY INJ	13
AGG ASSAULT AGAINST PUBLIC SERVANT	6
DEADLY CONDUCT	5
OBSTRUCTION OR RETALIATION (SERIOUS BODILY INJURY)	3
ASSAULT CAUSES BI DATE/FAMILY/HOUSE W/WEAPON	2
AGG ASSAULT BY PUBLIC SERVANT	1
ATTEMPT TO TAKE WEAPON FROM AN OFFICER	1
AGG ASSAULT IN RETALIATION	1
INJURY CHILD/ELDERLY/DISABLE W/INT SBI/MENTAL	1
Grand Total	159

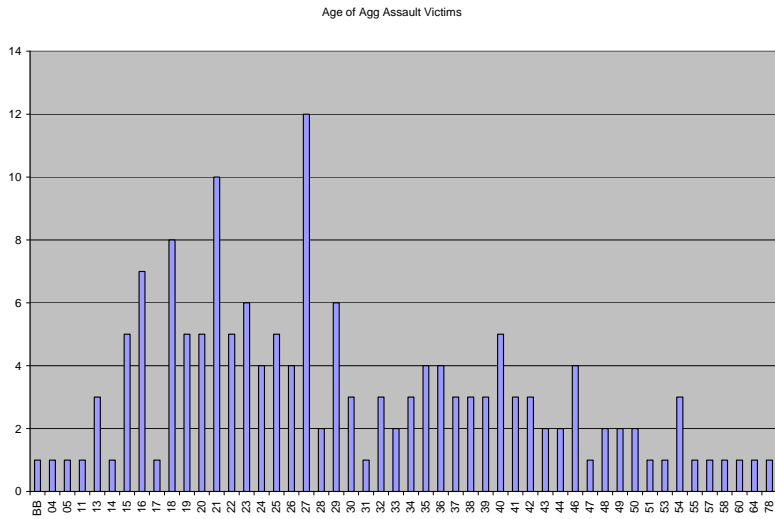
The breakdown by relationship between victim and offender is:

VICTIM'S RELATIONSHIP TO OFFENDER	Total
RELATIONSHIP UNKNOWN	35
STRANGER	32
ACQUAINTANCE	27
SPOUSE	15
BOYFRIEND/GIRLFRIEND	10
COMMON-LAW SPOUSE	10
FRIEND	6
SIBLING	5
EX-SPOUSE	4
OTHER FAMILY MEMBER	4
CHILD	3
NEIGHBOR	3
IN-LAW	2
EMPLOYEE	1
EMPLOYER	1
STEPCHILD	1
Grand Total	159

The breakdown by type of weapon used is:

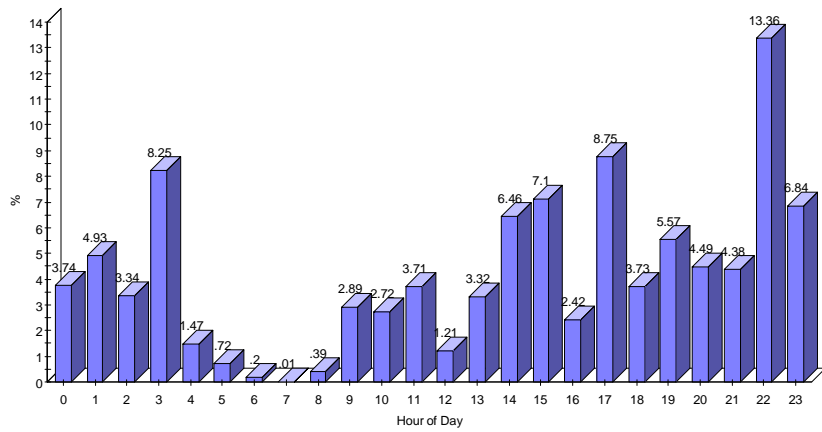
WEAPON USED	Total
BLUNT OBJECT (CLUB, ETC.)	34
MOTOR VEHICLE (AS WEAPON)	26
KNIFE/CUTTING INSTRU (AX, ETC)	24
PERSONAL WEAPONS (HANDS, ETC.)	17
LETHAL CUTTING INSTRUMENT	16
HANDGUN	16
THROWN OBJECT	6
UNKNOWN	5
FIREARM (TYPE NOT STATED)	5
BB GUN	3
RIFLE	3
CLUB/BLACKJACK/BRASS KNUCKLES	3
BOW	1
Grand Total	159

Of all victims, the most cases (modal average) occurred when the victim was 27 years old. The age of all victims is displayed in the following chart:



Times of Occurrence

The late evening hours are the most common times for aggravated assaults to occur, however there are significant cases just after lunchtime, after school, and after work.



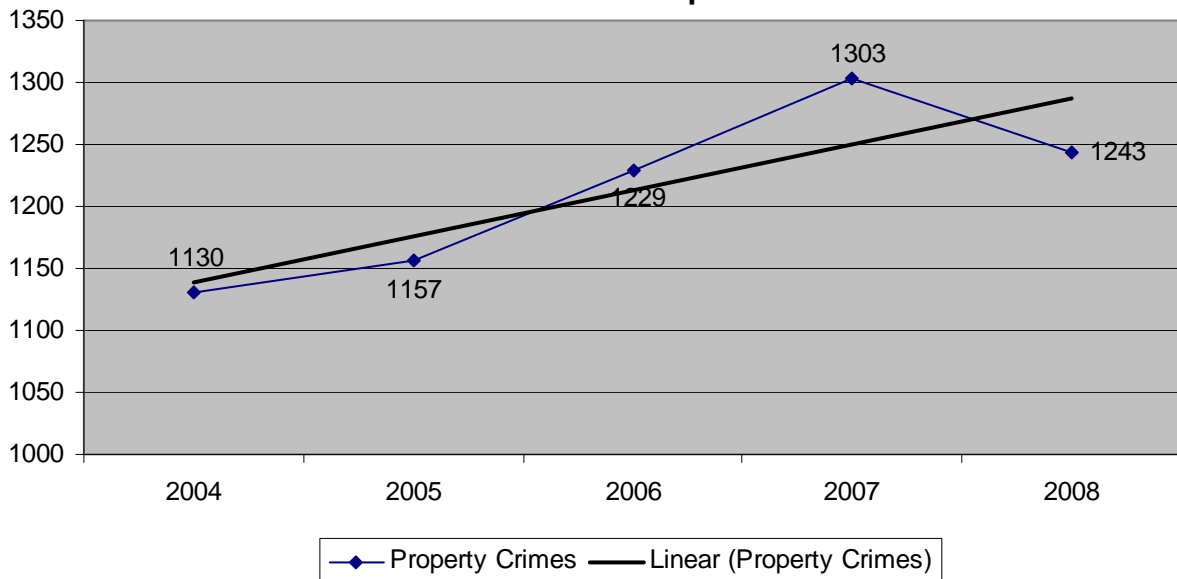
The breakdown by location is:

LOCATION	Total
MONTANA VISTA	36
CANUTILLO	31
HORIZON CITY	21
SAN ELIZARIO	18
FABENS	17
TORNILLO	12
CLINT	7
SPARKS	6
EL PASO	5
VINTON	3
DDF	2
SOCORRO	1
Grand Total	159

Crimes Against Property

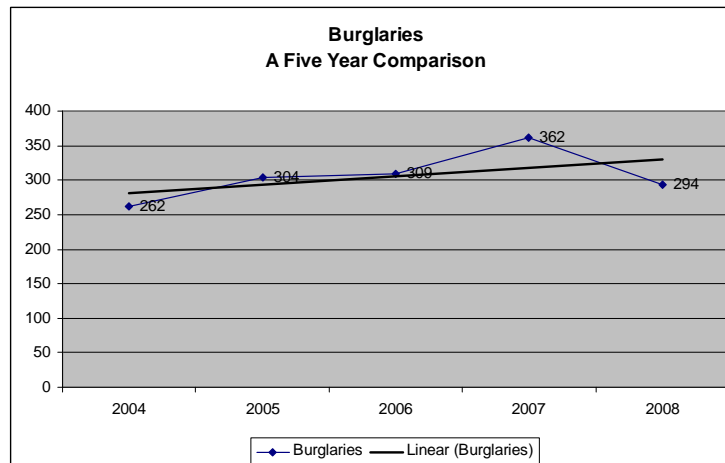
- This category includes the total of all burglaries, larcenies (thefts), arsons, and thefts of motor vehicles. According to the Uniform Crime Reporting Program's definition, property crimes involve the taking of property without the use of force against the victim.
- There were 1,243 total property crimes reported during 2008. This is a 4.6% decrease over the 1,303 reported during 2007.

**Part I Property Crimes
A Five Year Comparison**



Burglary: *The unlawful entry of a structure to commit a felony or theft. (The use of force is not required to classify an offense as burglary.)*

There were 294 burglaries reported during 2008. This was a 18.8% decrease over the 362 cases reported in 2007 and is the lowest annual total in the past four years. However the five-year linear trend still shows an increase.



Due to the number of cases involved, no effort was made to match RMS cases with UCR statistics for analysis purposes. The categories shown in the following comparisons are based strictly on the information entered in the reports. The information has only been audited for accuracy to the extent of filling in missing data. RMS shows 290 cases coded with the 220 UCR code for burglary in comparison to the 294 identified in UCR statistics. Of those 290 cases, 160 were completed burglaries of habitation, 107 were completed burglaries of building, 11 were burglaries of habitation with intent to commit other felony, 6 were attempted burglaries of habitation, and 6 were attempted burglaries of building. During the course of the year, Crime Analysis identified two burglary series in the Sparks area and surrounding colonias involving juveniles, and one series involving businesses along Montana Av. All series ended either with arrests or due to increased directed patrol activities.

The breakdown by type offense and location type is:

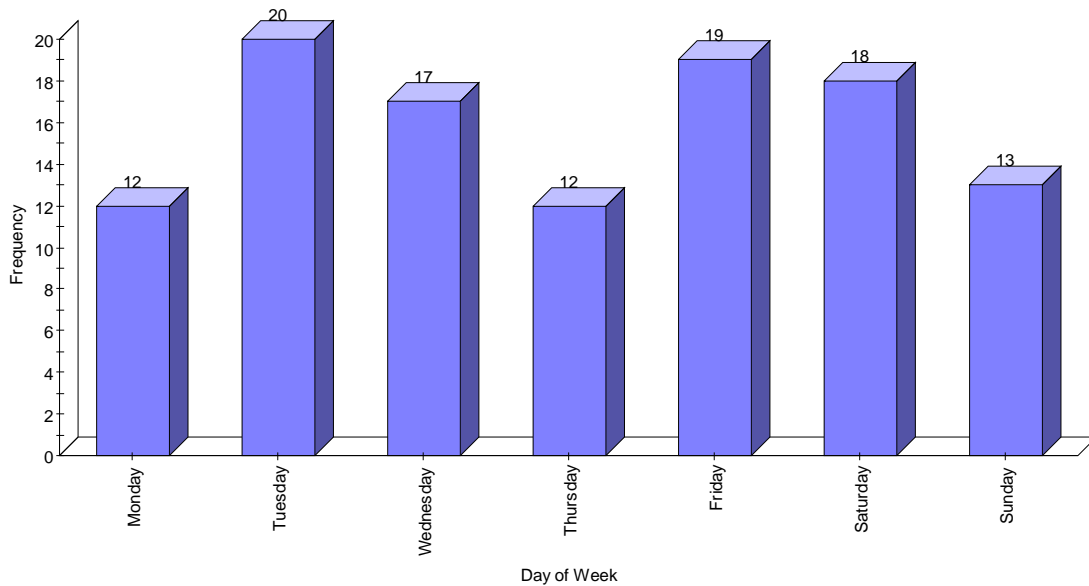
<i>Location Type</i>	<i>BURGLARY OF HABITATION</i>	<i>BURGLARY OF BUILDING</i>	<i>BURGLARY HABITATION INTEND OTHER FELONY</i>	<i>BURGLARY OF HABITATION (ATTEMPTED)</i>	<i>BURGLARY OF BUILDING (ATTEMPTED)</i>	<i>Grand Total</i>
APARTMENT/CONDO	1					1
BAR/NIGHTCLUB		1				1
CHURCH/ SYNAGOGUE/ TEMPLE		1				1
COMMERCIAL/OFFICE BUILDING		13			1	14
CONSTRUCTION SITE	2	16				18
CONVENIENCE STORE		9			1	10
DEPARTMENT/ DISCOUNT STORE		2				2
FIREWORKS STAND		1				1
GOVERNMENT/ PUBLIC BUILDING		1			1	2
GROCERY/ SUPERMARKET		1				1
INDUSTRIAL /MANUFACTURING		5				5
MOBILE HOME	32	1	2	2		37
OTHER RESIDENCE (APARTMENT/CONDO)	3					3
OTHER/UNKNOWN		2				2
RENTAL/STORAGE FACILITY		3				3
RESIDENCE/HOME	122	8	9	4		143
RESTAURANT		5			1	6
SALVAGE/RECYCLING YARD		4				4
SCHOOL/COLLEGE		2			1	3
SERVICE/GAS STATION		2				2
SPECIALTY STORE (TV, FUR, ETC)		2				2
STORAGE SHED OF BUILDING		11				11
STORAGE SHED OF HABITATION		17			1	16
Grand Total	160	107	11	6	6	290

The area where the offenses occurred breaks down as follows:

AREA	BURGLARY OF HABITATION	BURGLARY OF BUILDING	BURGLARY HABITATION INTEND OTHER FELONY	BURGLARY OF HABITATION (ATTEMPTED)	BURGLARY OF BUILDING (ATTEMPTED)	GRAND TOTAL
MONTANA VISTA	27	30	1	1	3	62
CANUTILLO	20	20	3	4		47
HORIZON CITY	30	13	2			45
FABENS	19	13	1		1	34
SAN ELIZARIO	20	10	2			32
CLINT	11	7	1			19
WESTWAY	10	5	1			16
TORNILLO	11	2		1	1	15
SPARKS	9	4				13
VINTON	3	2				5
ANTHONY		1				1
EL PASO					1	1
GRAND TOTAL	160	107	11	6	6	290

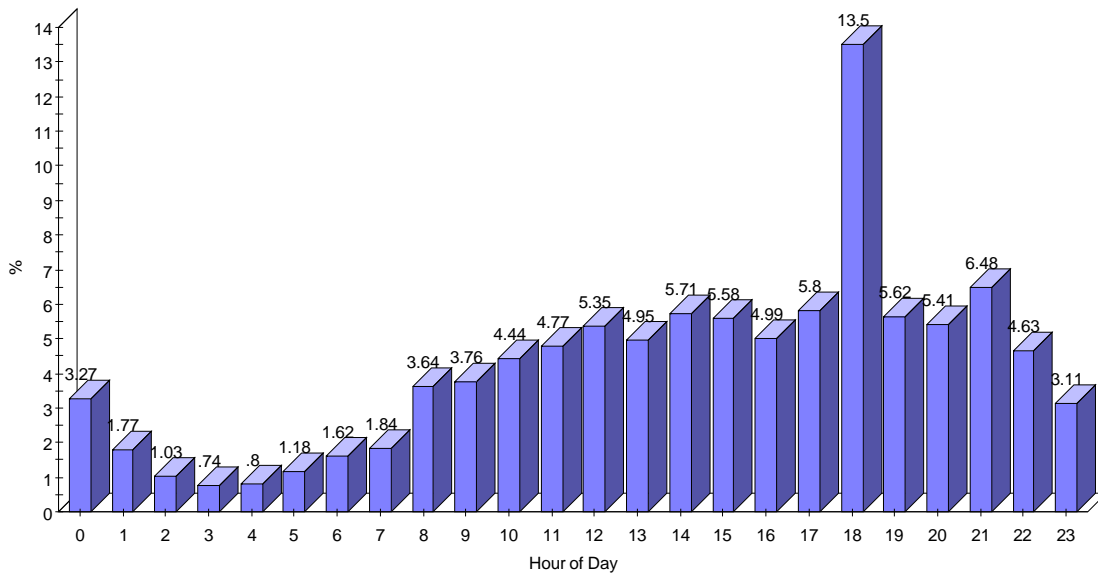
The following charts are based on the analysis of completed burglary of habitation cases with a time span of occurrence less than 24 hours.

Burglaries of Habitations by Day of Week



There is no significant deviation from day to day.

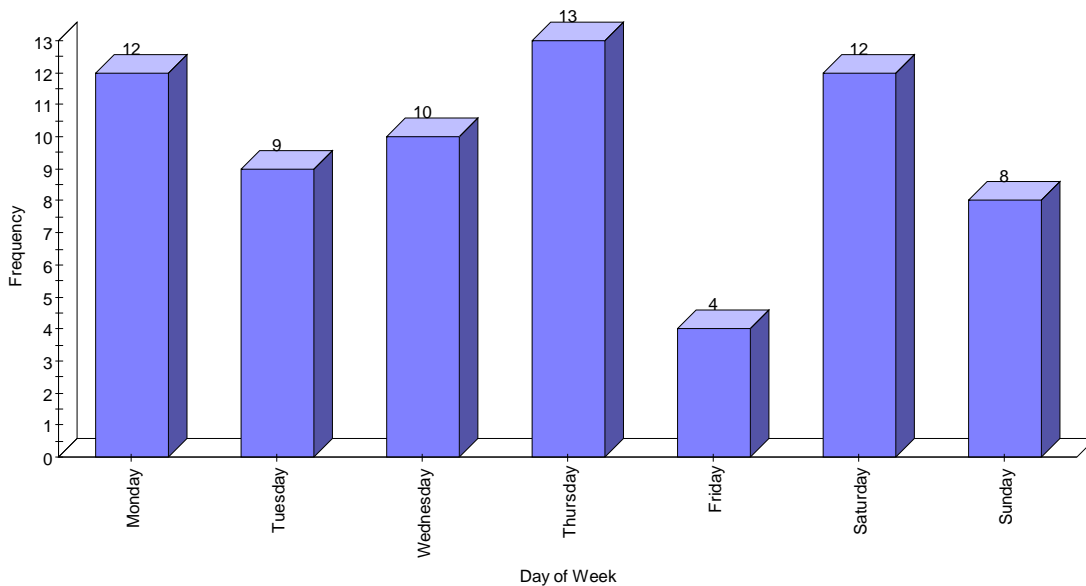
Burglaries of Habitations by Time of Day (Weighted Method)



There seems to be trends exhibited during the afternoon and evening hours. There is a definite spike around 1800 hours.

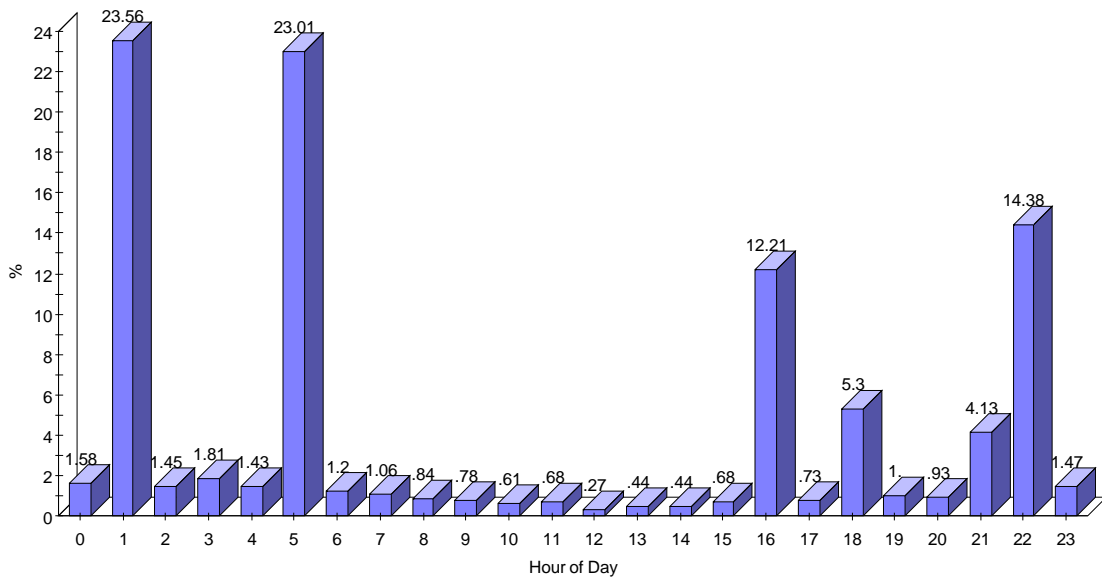
The next charts cover only completed burglaries of buildings.

Burglaries of Buildings by Day of Week



Thursday is the most popular day for building burglaries. Friday is the least active.

Burglaries of Business by Time of Day (Weighted Method)



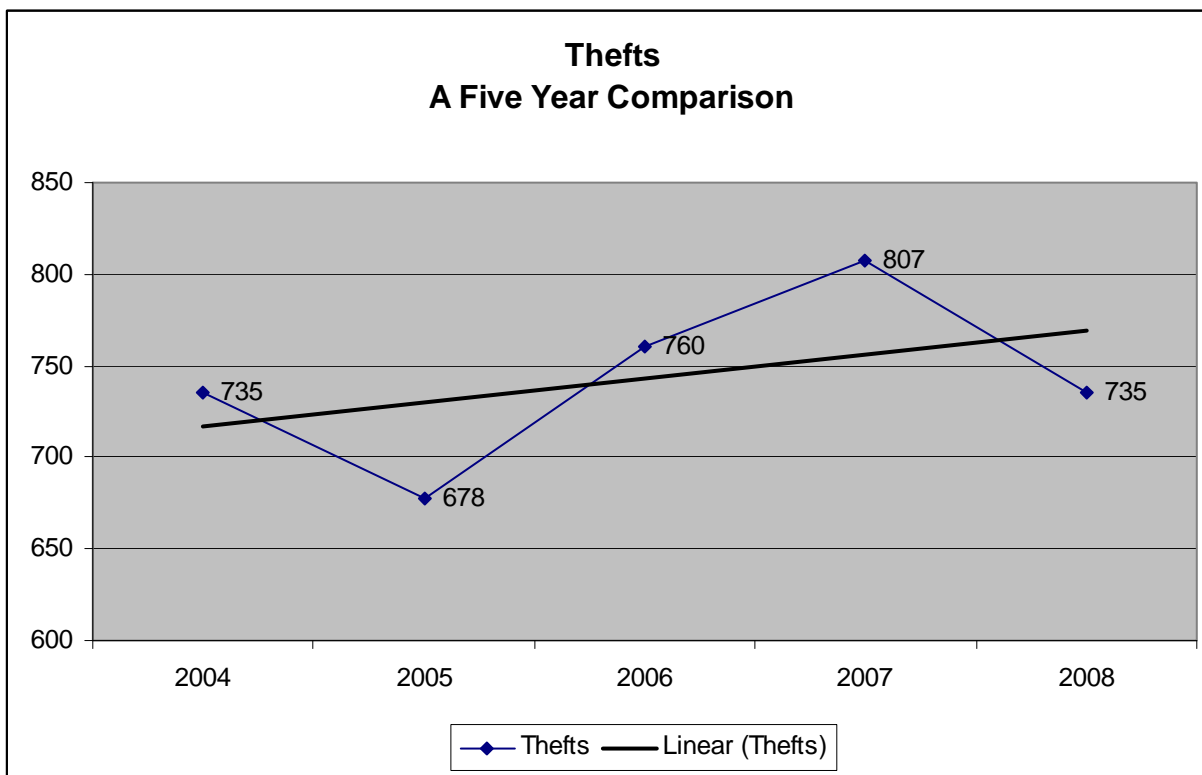
There are definite spikes at 0100 and 0500 hours. Secondary spikes occur at 1600 and 2200 hours. Very few building burglaries occur during the day.

The below table lists the top 10 most popular types of property taken in all burglaries. Tools is the top item followed by televisions and jewelry.

<i>Property Type</i>	<i>Total</i>
TOOLS	88
TELEVISION	46
JEWELRY	41
VIDEO GAME SYSTEMS/XBOX,PS, ETC	18
PAPER BILLS	17
COMPUTER BOX (CPU)	15
OTHER FURNISHINGS	15
CONSTRUCTION MATERIAL	14
DVD PLAYER/RECORDER	14
BEER	9

Larceny: (Theft) *The unlawful taking, carrying, leading, or riding away of property from the possession or constructive possession of another. It includes such crimes as shoplifting, pocket-picking, purse-snatching, thefts from motor vehicles (burglaries of autos), thefts of motor vehicle parts or accessories, bicycle thefts, etc., in which no use of force, violence, or fraud occurs. (This crime category does NOT include embezzlement, confidence games, forgery, and worthless checks. Motor vehicle theft is a separate UCR category.)*

There were 735 thefts reported this past year. This is an 8.9% decrease over the 807 reported in 2007. The five year trend, however, continues to rise.



Due to the number of cases involved, no effort was made to match RMS cases with UCR statistics for analysis purposes. The categories shown in the following comparisons are based strictly on the information entered in the reports. The information has only been audited for accuracy to the extent of filling in missing data. I have found 756 cases coded with the UCR code for Theft.

The breakdown by type of offense is:

UCR Description	Total
ALL OTHER LARCENY	421
THEFT FROM MOTOR VEHICLE	172
SHOPLIFTING	116
THEFT OF MOTOR VEHICLE PARTS/ACCESSORIES	25
THEFT FROM BUILDING	15
PURSE-SNATCHING	5
THEFT FROM COIN-OPERATED MACHINE	1
POCKET-PICKING	1

The table shows a significant number of thefts coded as “all other larceny”.

The top ten locations for thefts by Location type is:

Location Type	Total
RESIDENCE/HOME	271
CONVENIENCE STORE	101
PARKING LOT/GARAGE	62
SERVICE/GAS STATION	55
OTHER/UNKNOWN	45
SCHOOL/COLLEGE	29
HIGHWAY/ROAD/ALLEY	23
CONSTRUCTION SITE	20
COMMERCIAL/OFFICE BUILDING	20
GOVERNMENT/PUBLIC BUILDING	17

Due to the number of cases, corrections to addressing was not possible. Therefore, the cases will only be grouped by district as entered by report writers. The areas where thefts are occurring are:

DISTRICT	ALL OTHER LARCENY	THEFT FROM MOTOR VEHICLE	SHOPLIFTING	THEFT OF MOTOR VEHICLE PARTS/ACCESSORIES	THEFT FROM BUILDING	PURSE-SNATCHING	THEFT FROM COIN-OPERATED MACHINE	POCKET-PICKING
200	40	10	6	1	2	3		
210	25	11	2		1	1		
220	30	8	3	1	1			
230	26	9			3			
240	34	11	6	5	1			
250	38	25	6	1	2			1
260	107	47	20	10	1			
270	34	19	30	2	1			
280	37	11	16	4	2	1		
290	43	19	20		1		1	
DDF	1							
CLINT			3					
SOCORRO	4	1	4					

The top five addresses in generating theft cases are:

Address	Name	Total
1301 HORIZON BL	Flying J Truck Stop	32
1300 HORIZON BL	Love's Truck Stop	27
601 WESTWAY BL	Petro II Truck Stop	16
4815 ALAMEDA AV	R. E. T. G. H.	12
12901 ALAMEDA AV	7-Eleven Store	10

All of the cases at the 7-Eleven Store, 12901 Alameda Ave., were beer runs. Most of the cases at the Love's Truck Stop, 1300 Horizon Blvd., were fuel runs as were the majority of cases at the Petro II, 601 Westway Blvd. Most of the cases are RETGH were burglaries of vehicles. The Flying J Truck Stop has a mixture of case types.

Type of Property Taken

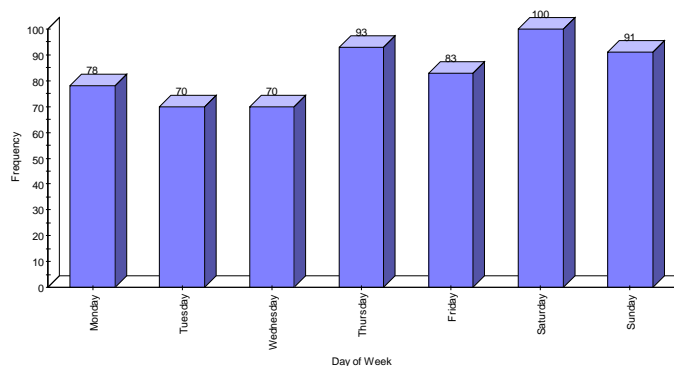
Items in this table were categorized by the type of property taken. If a case had 5 pieces of jewelry, \$40.00 in currency, and \$10.00 in coins taken, the items would be scored as jewelry-1 and Currency/Coin-1.

The top twenty categories of property taken are:

<i>Property Type</i>	<i>Total</i>
BEER	85
GASOLINE/DIESEL FUEL	57
CURRENCY/COINS	56
RADIO/ATTACHED TO VEHICLE	48
CELL PHONES/PAGER	48
OTHER AUTO PARTS	45
POWER TOOLS	38
CONSTRUCTION MATERIAL	30
HANDBAG/PURSE	28
TRAILER/FLATBED TRAILER	24
HAND TOOLS	24
COMPUTER LAPTOP	19
WALLET	19
TRASH CONTAINERS	18
IPODS, MP3 PLAYERS	18
GARAGE TOOLS (WRENCHES,RATCHETS)	17
JEWELRY	17
TIRES/WHEELS/RIMS	15
DOMESTICATED CANINE (DOGS)	13
LICENSE PLATES	13

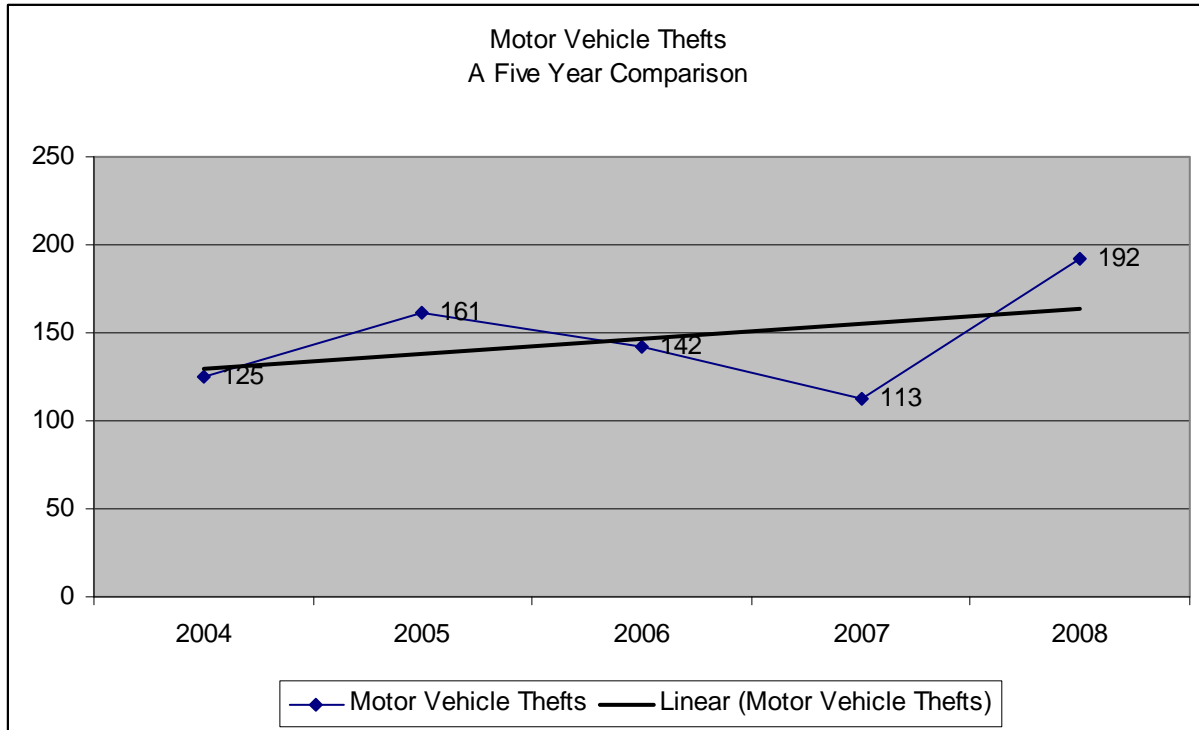
Beer runs and gas/fuel runs were high on the list along with thefts of cash and stereos taken in burglaries of vehicle. The number of cases where hand tools were taken could be misleading, as there is a separate category for garage tools to include wrenches and ratchets. The same could be said of auto parts, which are divided into several categories. Cell phones and power tools were also popular targets.

Due to the diversity in the types of thefts, a time analysis would not be beneficial. Of the 585 cases where the specific day of occurrence could be determined, the number of thefts by day of the week is fairly even, ranging from 70-100 per day. Most offenses occurred on Saturdays, with the latter part of the week slightly higher than the first part.



Motor Vehicle Theft: *The theft or attempted theft of a motor vehicle, include the stealing of automobiles, trucks, busses, motorcycles, motor scooters, snowmobiles, etc.*

There were 192 motor vehicles taken in 186 reported cases during 2008. This is a 69.9% increase over the 113 vehicles taken in 2007 and is the highest total in the past five years. Six cases had two vehicles stolen at the same time.



The breakdown by area is:

City	Total
HORIZON CITY	38
MONTANA VISTA	37
FABENS	23
CANUTILLO	22
SAN ELIZARIO	19
CLINT	16
SPARKS	13
EL PASO	9
WESTWAY	6
VINTON	5
TORNILLO	2
SOCORRO	1
ANTHONY	1
Grand Total	192

Of all vehicles stolen, 78 were pickups/vans/SUVs, 42 were passenger cars, 46 were ATVs, 14 were motorcycles, 11 were truck tractors, and 1 was a go-kart. The 46 ATVs was dramatically up from the 21 stolen in 2007 and continues the dramatic upward trend starting in 2006 when there were only four reported stolen.

Of the thirty-eight reported stolen in Horizon City, nineteen were in the passenger truck category that includes pickups, vans and SUVs.

Ford is the most common make of vehicle stolen with 45.

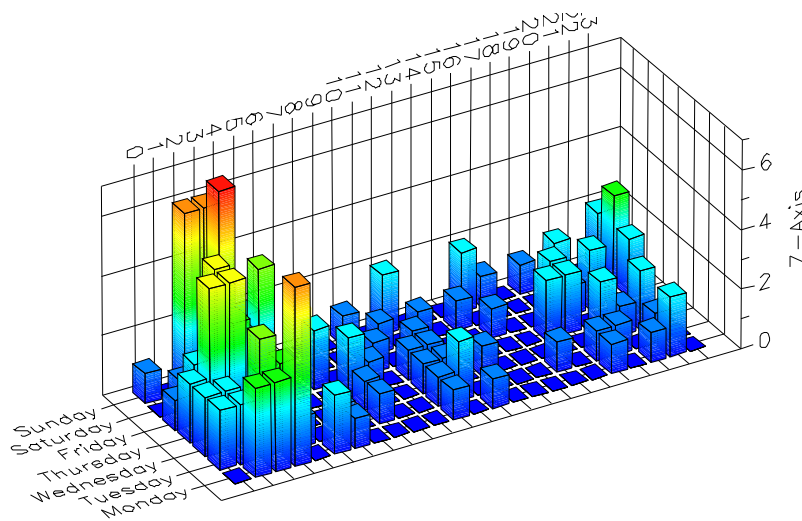
The Ford pickup/SUV/Van is the most common type vehicle with 36 incidents.

21 ATV's and 1 motorcycle had no make listed on the report.

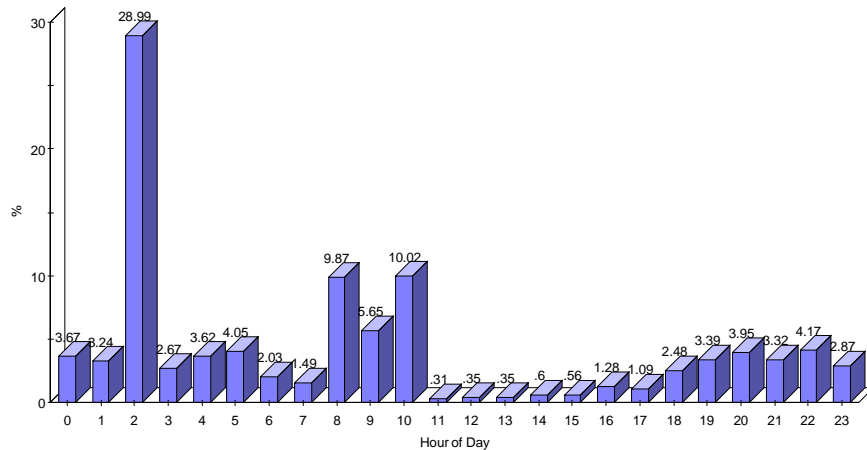
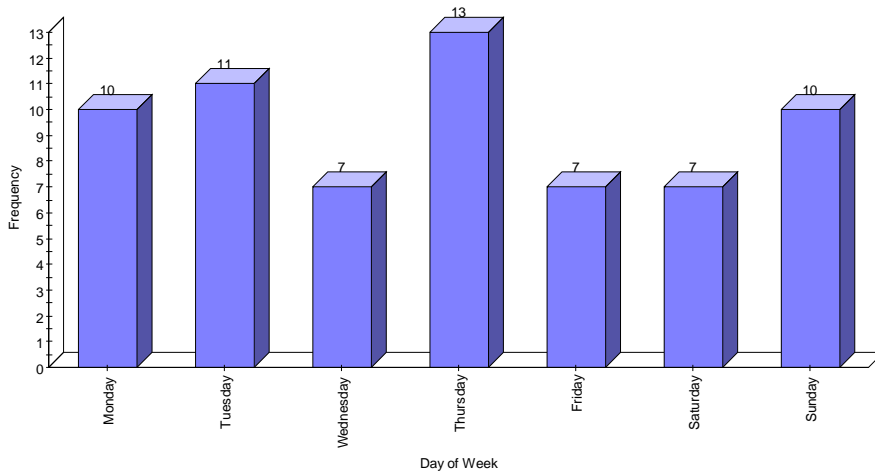
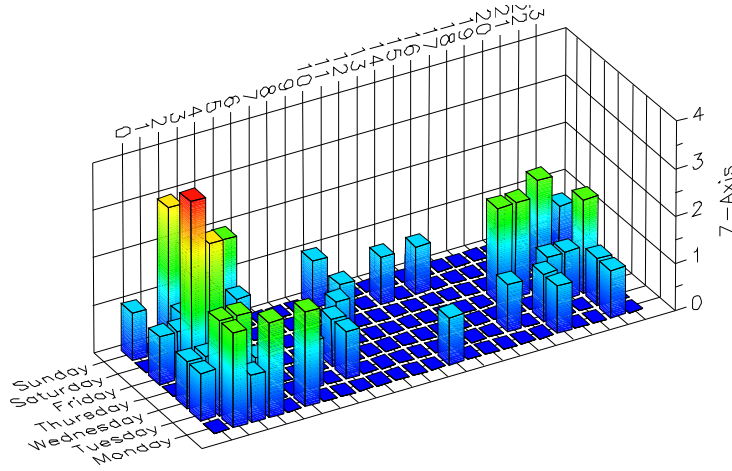
The five top makes of vehicles (including cases where no make was mentioned) comprise 58.9% of the vehicles stolen. The five makes of vehicles are shown in the below table, with each make broken down by type of vehicle.

<i>Make</i>	<i>Type</i>	<i>Total</i>
FORD	PASS	9
	PTRK	36
NO MAKE GIVEN	ATV	21
	MTCY	1
CHEVROLET	PASS	7
	PTRK	14
DODGE	PASS	5
	PTRK	11
YAMAHA	ATV	7
	MTCY	2
Grand Total		113

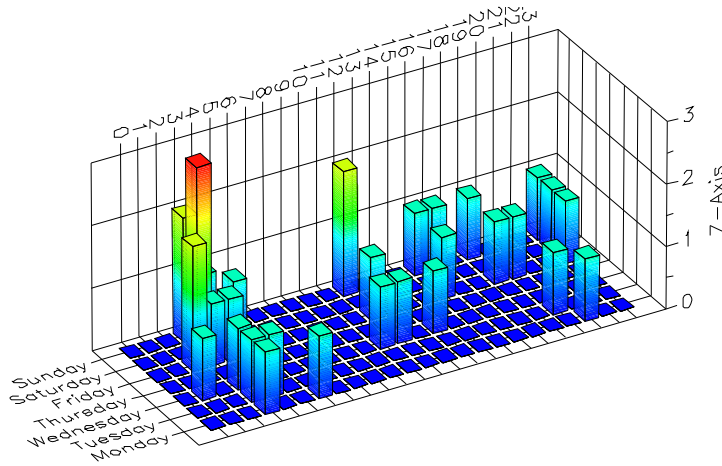
Of the 193 vehicles taken, 151 had a time of occurrence span of less than twenty four hours. The following charts are generated using all vehicles taken within a range of less than 24 hours. The temporal cityscape chart shows most vehicles are stolen during the early morning hours during the weekends.



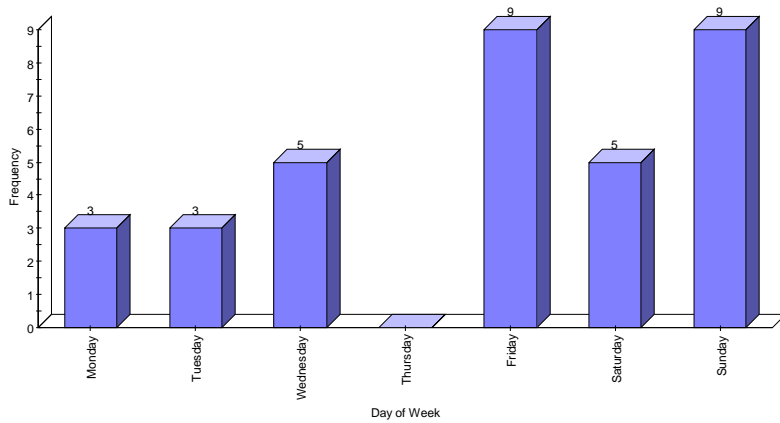
The following chart shows the temporal cityscape for trucks. The chart shows that Sunday mornings between 0200 and 0400 is the most common time. The charts showing count by day of week and time of day (weighted method) actually show that most trucks are taken on Thursdays with a huge spike between 0200 and 0300 hours and a smaller peak between 0800 and 1100 hours (weighted method).



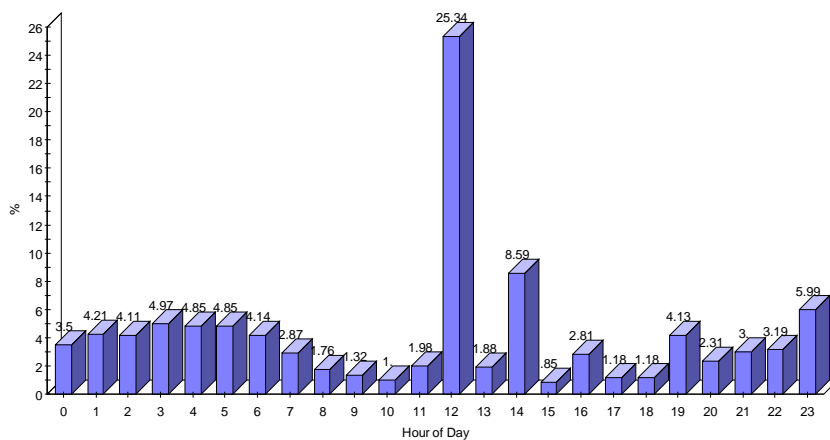
The temporal cityscape chart for thefts of passenger cars shows most occur around 0400 hours on Saturday. However, the entire weekend is popular.



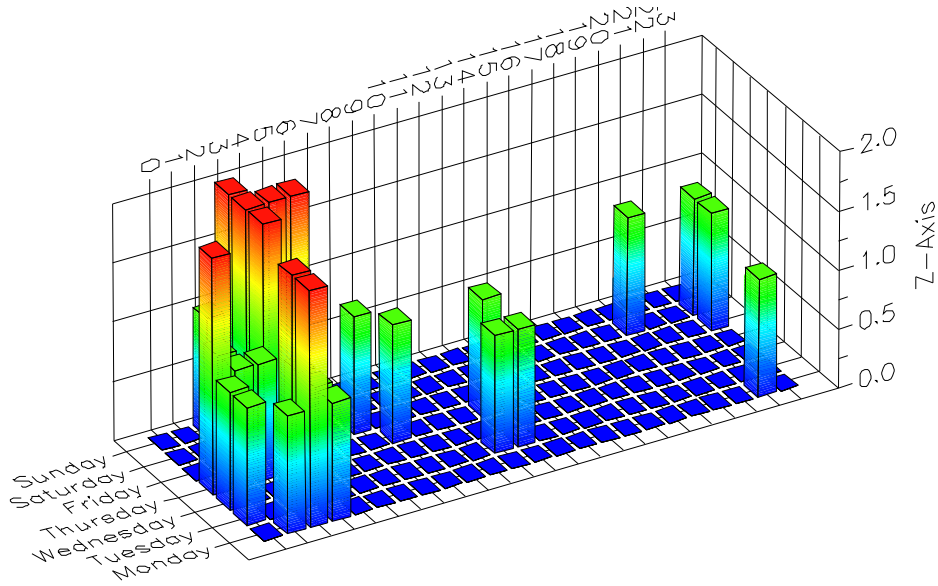
The below day of week chart confirms that weekends are most popular for thefts of passenger cars.



The below time chart (weighted method) shows that nighttime is common for thefts, but there is a huge spike occurring between 1200 and 1300 hours.



Most ATV thefts occur during the early morning hours.

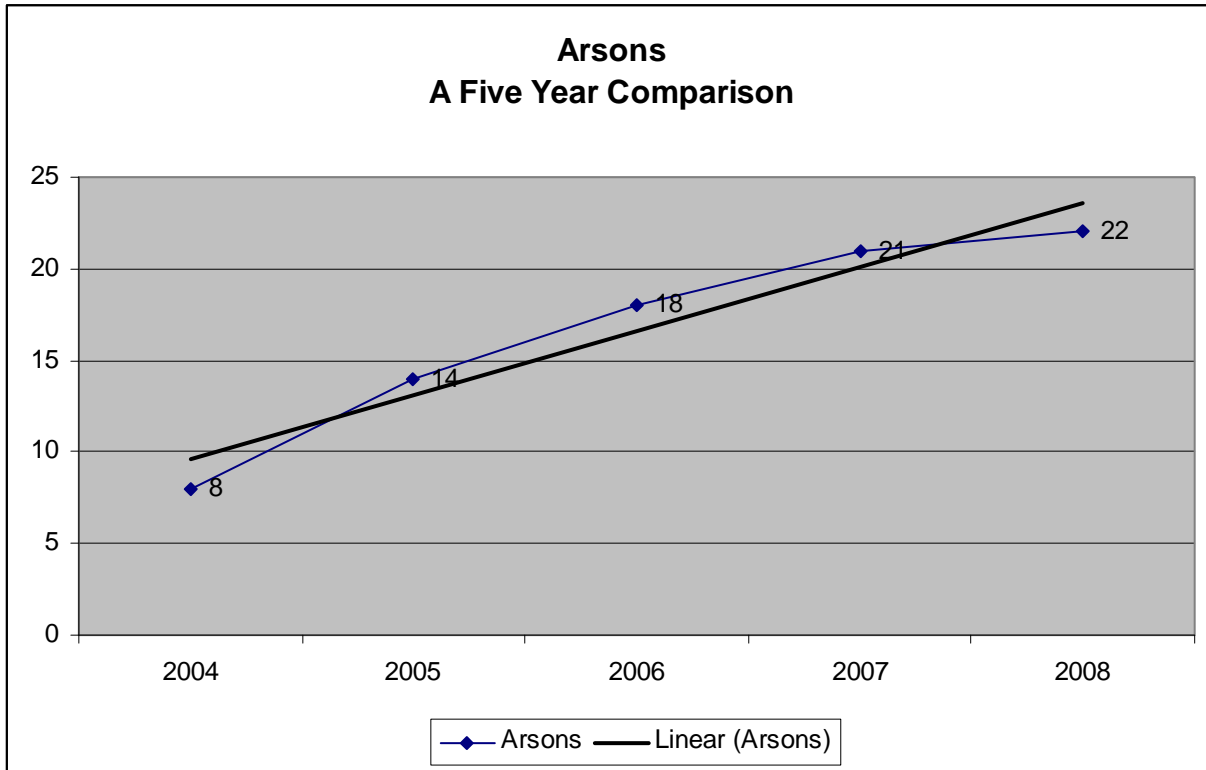


The following table shows the top five months for frequency of thefts for each of the top three categories of vehicle types. October had the most trucks stolen with 10, while September incurred the most passenger car thefts. February had the highest number of ATVs stolen.

Vehicle Type	Month	Total
TRUCK	Sep	10
	Nov	9
	Oct	9
	Aug	9
	Jul	9
PASSENGER CAR	Aug	8
	Feb	6
	Jun	5
	May	5
ATV	Oct	4
	Apr	10
	Sep	5
	Feb	5
	Jul	5
	Dec	4
Mar	4	
Grand Total		107

Arson : *The willful or malicious burning or attempt to burn, with or without intent to defraud, a dwelling house, public building, motor vehicle or aircraft, personal property of another, etc.*

There were 22 arson cases reported in 2008. This is up one case from the 2007 total of 21. The five year trend shows a steady increase with little variance between actual numbers and the trend line.



The breakdown by target type is:

Target Type	Total
VEHICLE	6
ABANDONED STRUCTURE	4
MOBILE HOME	2
BARN	2
FIELD/WOODS	2
APARTMENT	1
GOVERNMENT/PUBLIC BUILDING	1
CHURCH	1
RESIDENCE/HOME	1
COMMERCIAL BUILDING	1
TRAVEL TRAILER	1
GRAND TOTAL	22

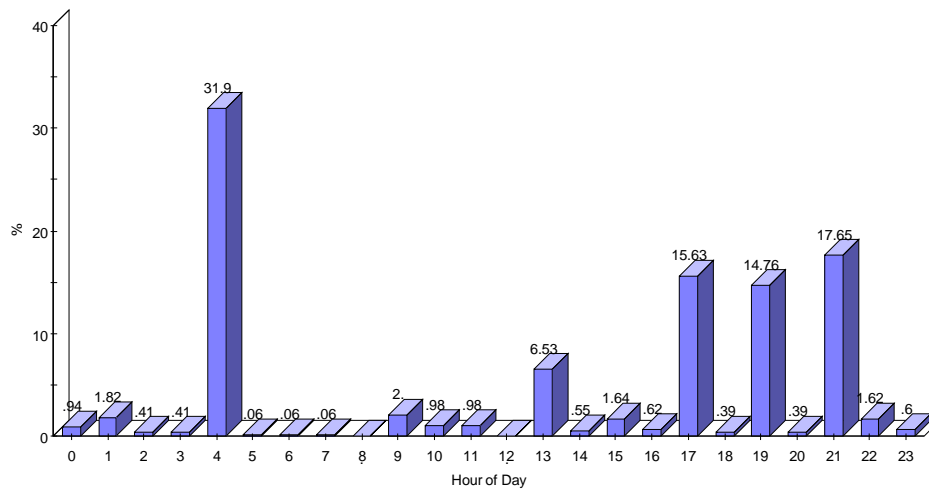
Six of the reported arsons were vehicle fires and four were abandoned structures. The arsons were spread throughout the county. Two of the arsons occurred at the abandoned Magic Landing Amusement Park.

The breakdown of arson offenses by area is:

city	Total
HORIZON CITY	5
MONTANA VISTA	3
SPARKS	3
FABENS	3
SAN ELIZARIO	3
CLINT	2
CANUTILLO	2
TORNILLO	1
Grand Total	22

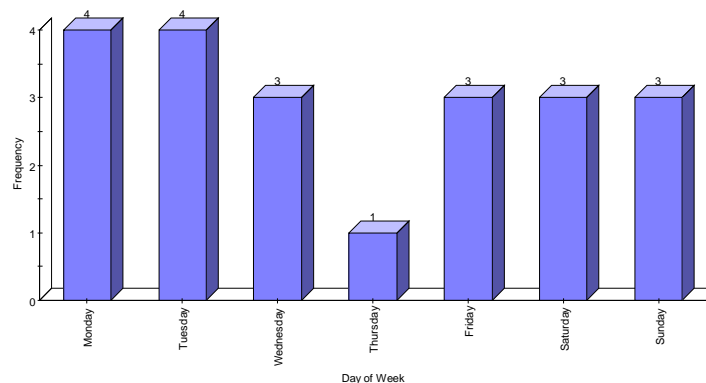
Temporal Analysis

Again, temporal analysis is only generated using events with a temporal range of less than 24 hours. Of all cases, one was excluded. One distinct peak occurs around 0400 hours. Overall, evenings is the most prevalent time.



Day of Week

The most popular days were Monday and Tuesday, with eight cases. However, the arsons are mostly evenly spaced throughout the week. No particular type of target is favored on any particular day.



Part One Clearance Rate

The below table shows the percentage of Part One Crimes cleared, either as cleared by arrest or exceptionally cleared. *It is possible that crimes committed in one year may not be cleared until a later year.*

- An offense is “cleared by arrest” when at least one person is arrested, charged with the commission of the offense, or turned over to the court for prosecution.
- An offense can be “exceptionally cleared” under the following circumstances:
 - Death of the offender
 - Prosecution denied
 - Extradition denied
 - Victim refused to cooperate
 - Juvenile in custody.

Offense Type	2007			2008			2007
	Reported	Cleared	Clearance Rate	Reported	Cleared	Clearance Rate	National Clearance Rate
Homicide	3	1	33.3%	2	2	100%	60.7%
Rape	18	10	55.6%	27	11	40.7%	43.5%
Robbery	29	11	37.9%	32	16	50%	27.5%
Agg Assault	173	115	66.5%	162	99	61.1%	58.4%
Violent Crime Total	223	137	61.4%	223	126	57.4%	50.3%
Burglary	362	54	14.9%	294	37	12.6%	12.6%
Theft	807	101	12.5%	735	97	13.2%	17.4%
Motor Vehicle Theft	113	33	29.2%	192	27	14.1%	12.6%
Arson	21	5	23.8%	22	5	22.7%	18.0%
Property Crime Total	1303	193	14.8%	1243	166	13.4%	16.2%
Total Part One	1526	330	21.6%	1466	292	20.1%	N/A

Summary

Total Part One Crime was down 3.9% in 2008, with property crimes down 4.6%. The property decrease in crimes was led by an 18.8% decrease in burglaries. Also down were thefts (-8.9%). Decreases in the violent crimes were in the areas of Homicides (-33.3%) and aggravated assaults (-6.4%).

There were significant increases in motor vehicle thefts (+69.9%), rapes (+50%), and robberies (+10.3%). Patrol should make every effort to check pickups and SUV's out during the early morning hours, keeping a lookout during the same time for vehicles carrying ATV's. Crime Prevention could start pushing the H.E.A.T. program, in conjunction with patrol units stopping any vehicle with a H.E.A.T. sticker being driven during designated hours. Directed crime prevention activities could be utilized to influence public awareness as to date rape and rape prevention. Though robberies are up over ten percent, in actuality there were only three more cases than occurred in 2007. Overall, it was a good year.

This page intentionally left blank



El Paso County Sheriff's Office
Research and Analysis Unit
Tom Spinks – Senior Research Analyst