

**El Paso County Sheriff's Office**  
**2007**  
**Annual Report**



**In Remembrance of**  
**Sheriff Leo Samaniego**  
**Our Leader, Our Mentor, Our Friend**

## **Our Mission Statement**

**The El Paso County Sheriff's Office, as part of, and empowered by the community, is committed to:**

- Protect lives, property, and the rights of people;**
- Maintain order;**
- Enforce the law impartially;**
- Provide quality police service in partnership with other members of the community.**

**To fulfill our mission, we will strive to attain the highest degree of ethical behavior and professional conduct at all times.**

## **Our Core Value**

**The El Paso County Sheriff's Office values the trust the public has given us and will honestly and ethically carry out our responsibilities. We will adhere to the Constitutions of the United States and the State of Texas in pursuit of community service. We will investigate and respond appropriately to all allegations of impropriety.**

# Table of Contents

<b>A Message From Our Sheriff .....</b>	<b>2</b>
<b>Facts At A Glance .....</b>	<b>3</b>
<b>Agency Demographics .....</b>	<b>4</b>
Personnel .....	4
Organizational Chart.....	6
Budget.....	7
<b>Law Enforcement Statistics.....</b>	<b>9</b>
Part One Offenses .....	9
Narcotics .....	12
Civil Process .....	13
<b>Detention Services .....</b>	<b>14</b>
Downtown Detention Facility .....	14
Jail Annex .....	15
<b>Awards and Commendations .....</b>	<b>16</b>



*The Only Sheriff's Office Anywhere  
to receive the prestigious CALEA TRI-ARC Aware*

# A Message From Our Sheriff

Our beloved leader and mentor, Sheriff Leo Samaniego went to be with the Lord on December 28, 2007. On January 14, 2008, the El Paso County Commissioner's Court appointed me to serve as Sheriff of El Paso County for the remainder of Sheriff Samaniego's last year of his six terms in office.

It is with great pride and honor that I assume the office of Sheriff of El Paso County. While Sheriff Leo Samaniego spent most of this year coping with his illness, the members of this great agency stepped up and achieved the goals he longed for. We were able to give him a successful conclusion thanks to the dedication, commitment, and professionalism of our employees.

This year, your Sheriff's Office earned and received the coveted Commission for Accreditation of Law Enforcement Agencies (CALEA) Tri Arc award for excellence in Law Enforcement, Training, and Communications. There are over 30,000 law enforcement agencies in the country and only four have earned this distinct honor. Three of these agencies are municipal police departments. The El Paso County Sheriff's Office is the first and only sheriff's office in the world to achieve this recognition of excellence. Additionally, the downtown jail and the jail annex are the only jails in Texas that are nationally accredited by the American Correction Association's Commission on Accreditation for Corrections. Our employees truly exemplify our motto, "We serve with Pride."

We move into 2008 with one goal in mind, to continue to diligently provide the best quality service possible to the citizens of El Paso County and to leave the next Sheriff with the best Sheriff's Office in the world.

Sincerely



Jimmy Apodaca  
Sheriff



*Sheriff Santiago "Jimmy" Apodaca*



*The CALEA TRI-ARC awards are dedicated to Sheriff Leo Samaniego, whose dream led to the El Paso County Sheriff's Office becoming the first Sheriff's Office in the world to receive this coveted honor.*



# Facts At A Glance

Total Population of El Paso County	734,669
Population of El Paso County excluding City of El Paso	125,254
Total Area of El Paso County	1,058 Square Miles
Rural Area of El Paso County	808 Square Miles
FY 2006-2007 Budget	\$76,798,195
Sworn Deputies (Authorized)	253
Sworn Detention Officers (Authorized)	619
Non-Sworn Civilian Staff (Authorized)	209
Fleet (All vehicles)	282
Calls for Service (Non-administrative - SO Patrol Units Responded)	73,174
Average Daily Jail Population (All Facilities)	2,220
Total Inmates Booked	43,833

The El Paso County Sheriff's Office is organized into two Bureaus: Law Enforcement and Detention.

The Law Enforcement Bureau has three divisions:

- Patrol
- Criminal Investigations
- Special Operations

The Detention Services Bureau has two divisions:

- Downtown Detention Facility
- Jail Annex.

The Law Enforcement Bureau is responsible for all law enforcement activities including civil process, while the Detention Bureau is responsible for all jail functions. Commissioned employees are offered two different career paths. All new commissioned employees are hired as Detention Officers. Upon completion of the Basic Detention Officer's training, they are assigned to either the Downtown Detention Facility or the Jail Annex. After serving as a Detention Officer for a period of one year, the employee has the option of either staying in the detention career path, or applying for law enforcement. If selected, the employee attends Basic Peace Officer's training, and upon completion, enters service as a Deputy Sheriff, assigned to one of three patrol stations. The Patrol Division provides primary law enforcement services to all unincorporated areas of El Paso County, and to the village of Vinton. In addition the Sheriff's Office provides law enforcement and investigative support to the towns of Socorro, Horizon City, Anthony, and Clint. Operations are also conducted within the city of El Paso.



# Agency Demographics

## Personnel

### Total Sheriff's Office Employees

Category	Authorized Strength	Actual Strength	Number of New Hires	Number of Separations	Turnover Rate
Civilians	209	200	23	29	14.5
Detention Officers	619	608	33	42	6.9
Peace Officers	253	246	1	14	4.91
<b>Total</b>	<b>1081</b>	<b>1054</b>	<b>57</b>	<b>85</b>	<b>5.7</b>

### TCLEOSE Certification

Peace Officer	
Intermediate	15
Advanced	60
Master	120
<b>Detention Officer</b>	
Intermediate	134
Advanced	161
Master	421

### College Education

Peace Officer	
Associates Degree	14
Bachelors Degree	20
Masters Degree	9
<b>Detention Officer</b>	
Associates Degree	28
Bachelors Degree	30
Masters Degree	2

### Average Employee Age

Deputy Sheriff	40
Detention Officer	36
Non-contract Employee	43
Sheriff's Office Employee	39
Employees Eligible for Retirement	141



## 2005 Demographics of Employees In Support of Law Enforcement Only

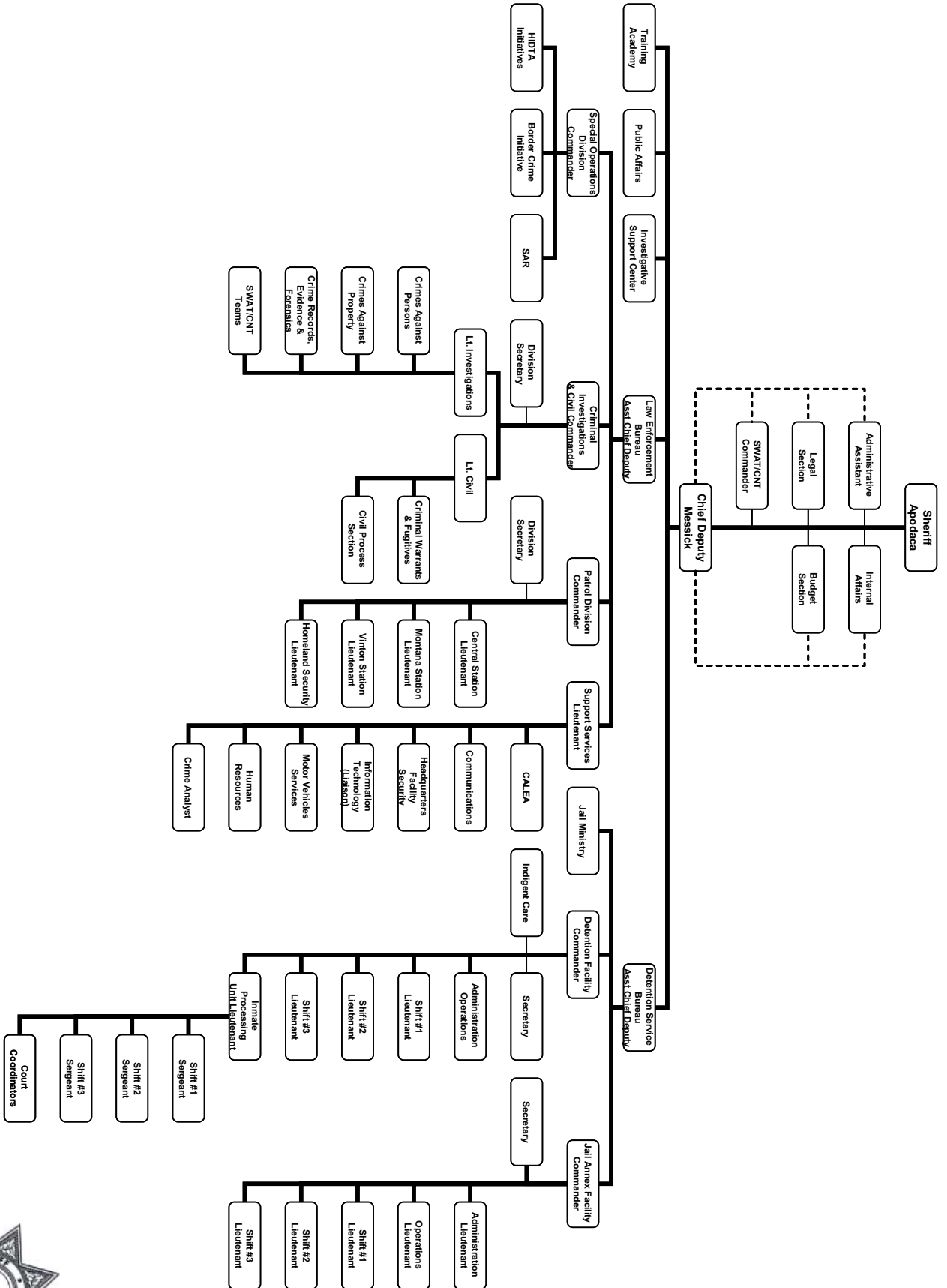
Sworn Personnel	Males				Females			
	Caucasian	African American	Hispanic	Other	Caucasian	African American	Hispanic	Other
Entry level technician	36	2	149	1	1	0	10	1
Supervisory (Cpl/Sgt)	7	0	16	0	0	0	0	0
Command (Lt/Cmdr)	4	0	8	0	0	0	0	0
Executives (AC-above)	0	1	2	0	1	0	0	0
Subtotal	47	3	175	1	2	0	10	1
Non-Sworn Personnel	Males				Females			
	Caucasian	African American	Hispanic	Other	Caucasian	African American	Hispanic	Other
Clerical / Custodial	1	0	2	0	5	1	36	4
Supervisory / Technical	6	0	15	0	1	1	15	0
Managerial / Professional	2	0	1	0	0	1	3	0
Executive	0	0	0	0	0	0	0	0
Subtotal	9	0	18	0	6	3	54	4
TOTAL	56	3	193	1	8	3	64	5

## Comparison of Sworn Personnel to Population Served

	Caucasian	African-American	Hispanic	Other
Census Data for Area Served	14%	3.4%	81%	1.6%
Sheriff's Office Sworn Personnel	20.7%	1.3%	77.4%	.45%



# Organizational Chart



# Budget

## Fiscal Budget 2006/2007 (Amended)

Description	Courthouse	Law Enforcement	Detention Facility	Jail Annex	Totals
Salaries	\$509,114	\$14,603,001	\$16,014,623	\$13,566,492	\$44,693,230
Fringe Benefits	\$154,407	\$5,893,985	\$7,098,483	\$6,340,995	\$19,487,870
Operating Expenses	\$22,530	\$1,775,535	\$5,108,126	\$5,664,826	\$12,571,017
Equipment Under \$5,000	\$0	\$0	\$7,451	\$38,627	\$46,078
Renovations					\$0
Vehicles					\$0
Equipment					\$0
<b>Total</b>	<b>\$686,051</b>	<b>\$22,272,521</b>	<b>\$28,228,683</b>	<b>\$25,610,940</b>	<b>\$76,798,195</b>

## Fiscal Budget 2006/2007 Revenues

Description	Amount
Bail Bond Permits	\$9,000
Criminal Alien SCAAP	\$374,559
County Sheriff's Fees	\$276,755
Incentive Payments	\$59,600
Federal Prisoner	\$14,355,627
Prisoner Maintenance	\$2,067,136
Extradition Prison	\$1,664
Weekender Prisoner	\$3,942
Stale Date Checks	\$159
Commissions	\$28
NSF Check Fees	\$150
Interest Earnings	\$37,941
Reimbursements - Inmate Transport	\$47,834
Reimbursements - Salaries	\$80,951
Unclassified Revenues	\$6,404
Inmate Phone Commissions	\$695,112
Commissary	\$642,249
Commissary Interest	\$12,098
County Sheriff Fee	\$75
Stale Dated Checks	\$204
Reimbursement-Expenditures	\$977
Transfers In-Grant	\$2,264
<b>Total</b>	<b>\$18,674,729</b>

## Fiscal Budget Trends (Amended) 2001-2007

Year	Total Budget	% Change
2001	\$45,799,489	9.10%
2002	\$52,991,489	15.70%
2003	\$59,726,132	12.71%
2004	\$63,884,173	6.96%
2005	\$70,104,843	9.74%
2006	\$70,984,496	1.25%
2007	\$76,798,195	8.19%



## Grants Received 2006/2007 Fiscal Budget

Grant	Award	Match	Total
Homeland Security	\$156,584.79		\$156,584.79
HIDTA Administration	\$583,185.00		\$583,185.00
HIDTA Anti-Smuggling	\$530,193.00		\$530,193.00
HIDTA Enterprise Money Laundering	\$334,168.00		\$334,168.00
HIDTA Fugitive Task Force	\$210,624.00		\$210,624.00
HIDTA Intelligence Support Center	\$792,699.00		\$792,699.00
HIDTA Multi-Agency Task Force	\$419,121.00		\$419,121.00
HIDTA Stash House	\$122,077.00		\$122,077.00
HIDTA Training	\$62,282.00		\$62,282.00
HIDTA Trans/Hijack Task Force	\$207,688.00		\$207,688.00
Major Drug Trafficking Organization	\$200,000.00		\$200,000.00
Domestic Highway Enforcement- Intelligence	\$43,800.00		\$43,800.00
Domestic Highway Enforcement-Transport	\$20,000.00		\$20,000.00
Metro Narcotics (4/1/06 to 3/31/07)	\$2,067,520.00		\$2,067,520.00
Metro Narcotics (4/1/07 to 9/30/07)	\$1,033,769.00		\$1,033,769.00
Justice Assistance Program 2007 (50% County of El Paso & 50% City of El Paso)	\$366,087.00		\$366,087.00
Law Enforcement Officer Standards Education	\$63,554.90		\$63,554.90
Operation Wrangler	\$236,146.41		\$236,146.41
Paso Del Norte Health Foundation Grant	\$6,000.00		\$6,000.00
State Operation Linebacker	\$365,120.00		\$365,120.00
Federal Operation Linebacker	\$550,594.00		\$550,594.00
Region VIII Training Academy	\$216,668.00		\$216,668.00
Texas Comptroller Tobacco Compliance	\$20,000.00		\$20,000.00
Victim Coordinator Liaison Grant (Texas Office of the Attorney General )	\$39,000.00		\$39,000.00
Victim of Crime Act (TX Office of the Governor- Criminal Justice Division)	\$38,098.00	\$11,648.00	\$49,746.00
<b>TOTAL</b>	<b>\$8,684,979</b>	<b>\$11,648.00</b>	<b>\$8,696,627</b>

## Donations Received 2006/2007

Donor	Amount	Program
El Paso County 911 District	\$36,878.04	Equipment Upgrades for the Communications Section.
Walmart Store #2201 7101 Gateway West	\$500.00	To purchase supplies for K-9 Unit
VEST 'N P.D. P., Inc. Police Dog Protection	\$2,085.00	(3) Bulletproof Vests for K-9 Unit valued at \$695 each
Union Pacific Railroad	\$1,000.00	(200) Assorted rail road ties for the fire arms range



Reserve Police Officer Association	\$1,948.00	(2) Mountain Bikes for Bike Patrol Program
Walmart- Store #1015 7555 N. Mesa	\$500.00	Grab & Run Bag Program for Community Services
Mr. Luis Mejia Lerma	\$25.00	Amber Program for Community Services
Mr. George Wilkes	\$20.00	Amber Program for Community Services
Totals	\$42,956.04	

## Law Enforcement Statistics

### Part One Offenses

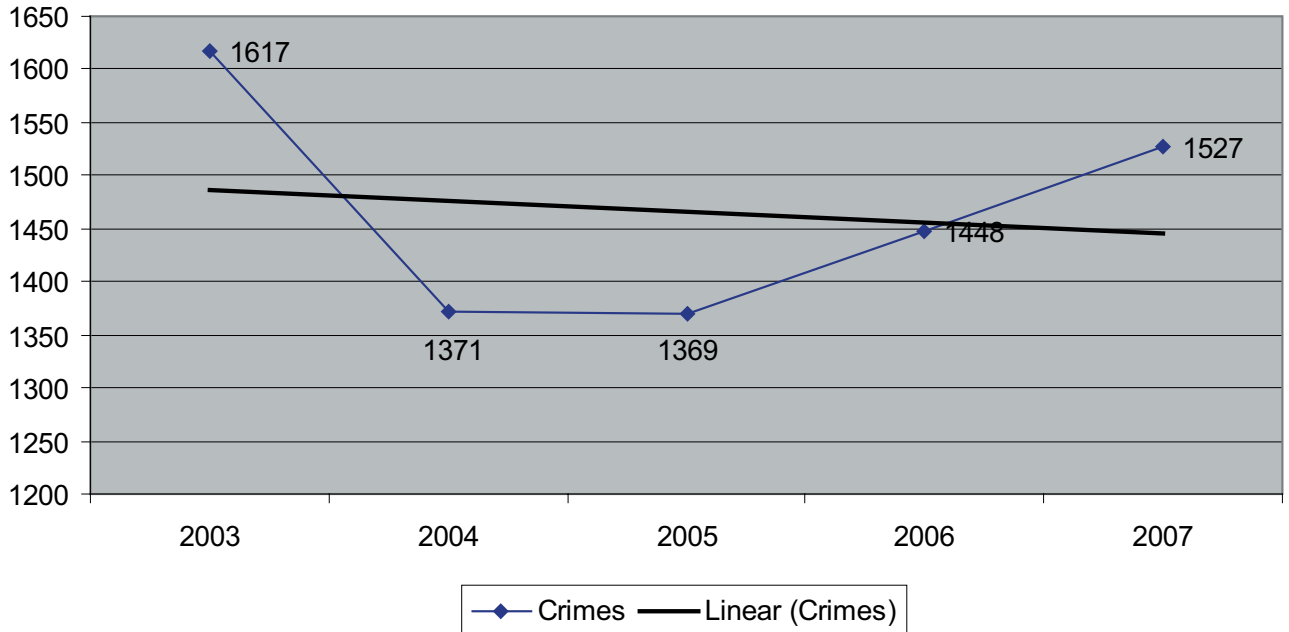
OFFENSE	TOTALS		CASES CLEARED	
	2006	2007	2006	2007
MURDER	8	3	7	1
SEXUAL ASSAULT	25	18	14	10
ROBBERY	20	29	7	11
AGGRAVATED ASSAULT	166	173	113	115
BURGLARY	309	363	34	54
LARCENY (THEFT)	760	807	102	101
VEHICLE THEFT	142	113	39	33
ARSON	18	21	5	5

### Clearance Rate For Part One Offenses

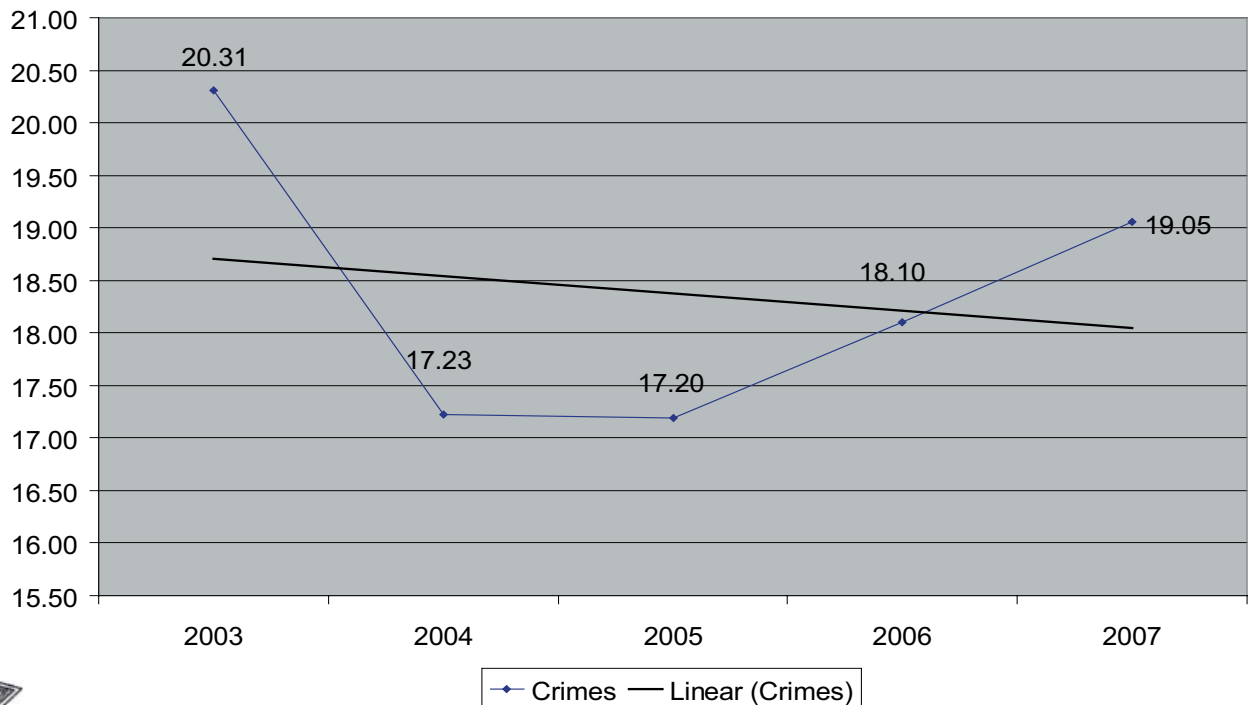
OFFENSE	2006	2007	2006 NATIONAL UCR CLEARANCE RATE ( All Agencies)	2006 NATIONAL UCR CLEARANCE RATE (Suburban Areas)
MURDER	88%	33%	60.7%	64.7%
SEXUAL ASSAULT	56%	56%	40.9%	43.1%
ROBBERY	35%	38%	25.2%	28.7%
AGGRAVATED ASSAULT	68%	66%	54.0%	59.7%
BURGLARY	11%	15%	12.6%	13.7%
LARCENY (THEFT)	13%	13%	17.4%	18.1%
VEHICLE THEFT	27%	29%	12.6%	15.4%
ARSON	28%	24%	17.1%	19.8%



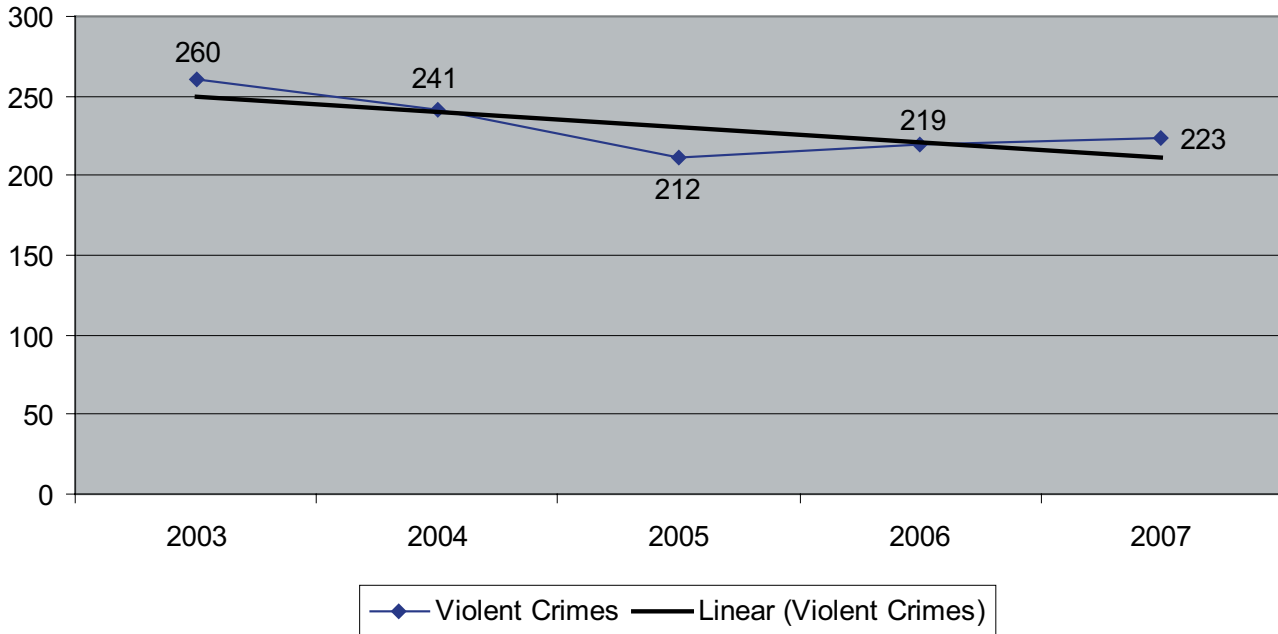
### Part I Crimes A Five Year Comparison



### Part I Crimes per Thousand Population A Five Year Comparison

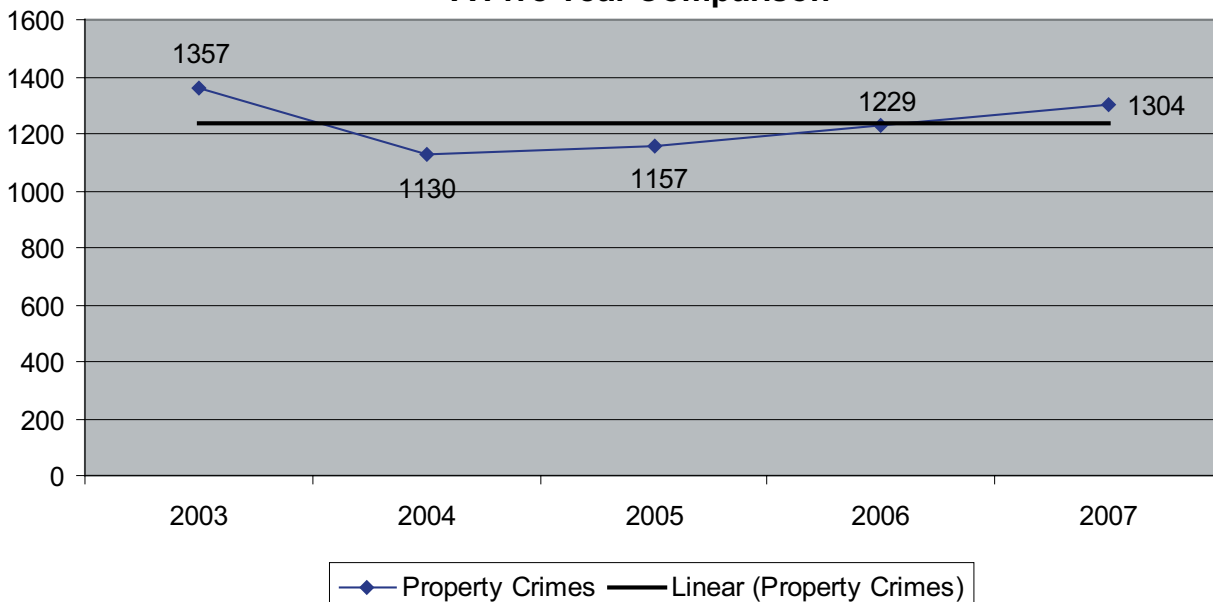


### Part I Violent Crimes A Five Year Comparison



*Violent Crimes include Murder, Sexual Assault, Robbery, and Aggravated Assault*

### Part I Property Crimes A Five Year Comparison



*Property Crimes include all Burglaries, Thefts, Arsons, and Vehicle Thefts*



# Narcotics

Most of the narcotics related offenses are handled by the Special Operations Division, an investigative unit that targets street level narcotics sales, drug trafficking organizations and other types of financial crimes related to illicit drugs. As of April 1, 2006, new grant requirements expanded the role of the Special Operations Division to include gang criminal activity, human trafficking and organized criminal activity. The division is comprised of two investigative task forces funded by two different funding government agencies.

The first task force is the El Paso County Metro Criminal Enterprise Unit funded by the State of Texas Governor's Criminal Justice Division. The second task force is composed of five separate initiatives under the West Texas HIDTA funded by the Office of the National Drug Control Program.



## 2007 Drug Seizures by El Paso County Sheriff's Office

Agency Seizures	
Marijuana (lbs.)	29,973.20
Cocaine (kg)	51.7
Heroin (gr)	1,110
Methamphetamine (gr)	265.961
Depressants (gr)	167.5

In addition, there were five seizures of codeine based medications. Since the seizures were mixed to include both liquid and solid medications, no weight was determined. There were also \$197,845.00 in currency, twenty-six vehicles, and two televisions seized.

Sheriff's Office personnel assigned to various task forces assisted other agencies in seizing the following items during 2007.

Assisted Seizures	
Marijuana (lbs.)	118,996.81
Cocaine (kg)	1,325.15
Heroin (gr)	2.4
Methamphetamine (gr)	45

In addition, Sheriff's Office personnel assigned to various task forces assisted in the seizure of \$1,903,156.28 in currency, 118 vehicles, and 4 firearms.



## Civil Process

NOTE: All fees for process of documents received for the Local Citation Unit and Subpoena Unit are paid directly at the District Clerk's office or County Clerk's office. The monies are then credited by the District Clerk's or County Clerk's office to the "Sheriff's Fees" Account.

### Local Citation Unit

The Local Citation Unit is responsible for processing civil citations, and other court orders other than subpoenas. These citations and orders are generated from district and county courts within El Paso County. This unit also handles civil process for cases [i.e. child support, law suits, and other civil litigation orders] that are pending in El Paso County courts.

	FY-2006	FY-2007	% Change
Citations/legal documents Received:	18,715	14,228	-24%
Citations/legal documents served:	10,116	9,152	-10%
Citations/legal documents not served:	1,625	906	-44%
Civil Process service fees collected:	\$1,214,074.00	\$928,274.00	-24%

### Foreign Citation Unit

The Foreign Citation Unit is responsible for processing civil citations and other court orders other than subpoenas. These citations are generated from other county jurisdictions or another state.

	FY-2006	FY-2007	% Change
Citations/legal documents received:	1,319	1,169	-11%
Citations/legal documents served:	743	679	-09%
Citations/legal documents not served:	238	238	00%
Civil process service fees collected:	\$86,932.00	\$95,560.00	11%

### Execution Unit

The Civil Execution Unit is responsible for enforcing civil court orders to seize real and personal property and execute civil writs of attachments [i.e. evictions of persons from disputed property, and taking custody of child to the designed party on the writ]. This unit also conducts public auctions on real and personal property to satisfy court judgments.

	FY-2006	FY-2007	% Change
Writs received:	887	959	8%
Writs served:	298	582	95%
Writs not served:	603	246	-59%
Civil process service fees collected:	\$148,434.00	\$158,130.00	10%

### Subpoena Unit

The Subpoena unit is responsible for processing criminal and civil subpoena for scheduled court trials. Subpoena servers [deputies] tasks are to serve subpoenas, civil citations, and other court orders that do not require the seizure of real or personal property.

	2006	2007	% Change
Subpoenas/citations received:	22,276	22,623	2%
Subpoenas/citations served:	15,069	14,594	-3%
Subpoenas/citations not served:	7,061	6,740	-5%
Civil process service fees collected:	Not Reported	\$4,600	N/A



# Detention Services

## Downtown Detention Facility

The Downtown Detention Facility is located at 601 E. Overland across the street from federal courts, state district and county courts, Justice of the Peace court, and city municipal courts. The facility has over 310,440 square feet and a housing capacity of 1000 inmates. This facility has nine housing floors, three of which are designated for female housing. This facility also houses a Jail Magistrate Court, the Sheriff's Office Warrant Section, Jail Ministry Section, Bond Inmate and Trust Section, and liaison offices for the U.S. Border Patrol and Adult Probation.



Downtown Detention Facility Demographics	2006	2007	% Change
Individuals Booked	37,489	43,833	16.92%
Individuals Classified	29,998	35,411	18.04%
Releases from Facility	30,177	35,382	-24.70%
Daily Average Population	810	876	6.16%
Meals Served	1,188,530	1,173,421	-1.27%
Avg. Food Cost per Plate	\$0.71	\$0.68	-4.23%

*All state inmates housed in our facility are classified according to their current offense or conviction, offense history; escape history, institutional disciplinary history, prior convictions, alcohol and or drug abuse and stability factors. Seven different custody classifications are used to classify each inmate based on their initial interview.*

Downtown Detention Facility Inmate Escorts	2006	2007	% Change
Official Proceedings:	22,298	23,271	4.36%
Medical Referrals:	832	860	3.37%
Emergency Room Transports:	86	86	0%
Total Inmate Escorts:	23,216	24,217	4.31%



# Jail Annex

The El Paso County Jail Annex was opened as part of the Leo Samaniego Law Enforcement Complex. The Jail Annex is “campus style” podular/modular design. As such it contains twelve “pods.” Each pod consists of cells surrounding a central control/guard station. A series of four pods comprise a module/unit. There are currently three modules/units in operation however there is space on-site for expansion as the need arises. In an effort to reduce the likelihood of confrontations between inmates, the facility is designed to minimize inmate movement. Most services are delivered to the inmate, including, educational programs, ministry programs, distribution of prescribed medicines, commissary, meals served from our full service kitchen, laundry, and leisure library. Centralized services include medical clinic, and computerized law library.



The rated capacity is 1,450. The security/custody level is rated at maximum. A staff of 322 personnel are assigned to the Annex. The Annex is also responsible for the transportation of inmates between facilities, as well as the Texas Department of Correction (TDC) and other correctional facilities within the state.

<b>Jail Annex Demographics</b>	<b>2006</b>	<b>2007</b>	<b>% Change</b>
Daily Average Population:	1,285	1,344	4.59%
Number of Meals Served	1,571,019	1,648,354	4.92%
Average Cost Per Meal	\$.51	\$.49	-3.92%

<b>Jail Annex Transportation Runs</b>	<b>2006</b>	<b>2007</b>	<b>% Change</b>
Inmates transported to court	36,114	35,472	-1.78%
Mental Inmates transported to facilities	52	38	-26.92%
Inmates transported to TDC	483	333	-31.06%
Inmates transported to medical appointments-	1,747	1,771	1.37%%
Inmates transferred from Downtown to Annex	8,250	8,236	-0.17%



# Awards and Commendations

## Lifesaving

Joseph Williamson - Deputy  
Robert Graziano - Deputy  
Fernando Jr. Reyes - Deputy  
Richard Ortega - Deputy

## Certificate of

### Appreciation

Albert Banda - CID - Deputy  
Antonio Arias - CID  
- Detective  
Cynthia Monarrez  
- CID - Civilian  
Nancy Medina - Civilian of  
the Quarter - Detention  
Priscilla Carrasco -  
Civilian - Volunteer  
Raul Lorenzo Jacques  
- Civilian - Volunteer  
Carlos Azcarate - Deputy  
Jose Kluge - Deputy  
Annette Duran -  
Communications  
Cesar Martinez - Civilian of  
the Quarter - Detention  
Zoran D. Yankovich  
- Special Agent in  
Charge - DEA  
Heriberto Reyes - Civilian  
Ofelia Casas - CID - Civilian  
Katherine Porras  
- CID - Deputy  
Sonia Atkins - CID  
- Detective  
Arturo Hernandez - Civilian  
of the Quarter - Detention  
Antonio Triana - Detective  
Maria L. Velasco - Civilian  
of the Quarter - CID  
John M. Rankin -  
CALEA - Assessor  
Albert J.. McNally -  
CALEA - Assessor

Gil Kleinknecht - CALEA  
- Assessor  
Debra C. Duncan -  
CALEA - Assessor  
Manuel E. Mora - SAC - FBI  
Charles Birk - Volunteer  
Donald Bonneau - Volunteer  
Raul Chavez - Volunteer  
Denise Corral - Volunteer  
Lisle Davis - Volunteer  
Tom Dean - Volunteer  
Charlie Flores - Volunteer  
Debra Glass - Volunteer  
Sam Jr. Gonzales - Volunteer  
Margie Grijalva - Volunteer  
Charles Haddad - Volunteer  
Karen Herd - Volunteer  
Otto Herrera - Volunteer  
Sue Hobert - Volunteer  
Annette Horwitz -  
Volunteer of the Year  
Sondra Jones - Volunteer  
Patricia Kietzke - Volunteer  
Robert Kietzke - Volunteer  
Edward Kriegel - Volunteer  
Jerome Lavis - Volunteer  
Kathryn Lent - Volunteer  
Santa Mann - Volunteer  
Marcia Maurer - Volunteer  
Adri Peacock - Volunteer  
Raul Raygoza - Volunteer  
Elizabeth Torres - Volunteer  
Gabriel Trujillo - Volunteer

## Commendation

Braulio M. Silva -  
Courthouse Security  
Ron Murphy - Volunteer

## Academic

### Commendation

Jesse Briseno -  
Detention Officer  
Marc A. Chavez -  
Detention Officer

Cesar Rodriguez  
(Top Gun - Firearms)  
- Deputy  
Edgar Soto (Academic  
Award) - Deputy  
Cesar Arreola -  
Detention Officer

## Detention Officer of the Quarter Commendation

Michael Rodriguez -  
Detention Officer - DDF  
Ever Zavala - Detention  
Officer - Annex  
Paul Piniera - Detention  
Officer - DDF  
Jose Mascorro - Detention  
Officer - Annex  
Ruben Villa - Civilian - Annex  
Edie Jimenez - Detention  
Officer - DDF  
Matt Durning - Detective - CID  
Abel Morales - Deputy - CID  
Aurora Arce - Civilian - DDF  
Manuel Martinez - Detention  
Officer - DDF

## Sheriff's Citation

J Victor Crow Hernandez  
- Civilian  
Dan Watling - Deputy  
Jack Crandall - Lieutenant

## Retirement

Onesimo Esparza - Detective  
Howard L. Capshaw  
- Detention Officer  
David Hajar - Maintenance  
Foreman  
Ruby Ann Stiltner - Detective  
Jack L. Crandall - Lieutenant  
Tomas Cisneros - Deputy  
Johnny Paniagua - Detective  
George J. Jarvis - Sergeant  
Juan Hernandez - Detective  
Antonio Morales - Deputy



This document was prepared by  
the El Paso County Sheriff's Office  
Crime Analysis Unit

For more about the Sheriff's Office  
please contact us at:

**El Paso County Sheriff's Office**

**P. O. Box 125**

**El Paso, Texas 79941-0125**

Our phone number is:

**(915) 538-2217**

Or visit us on the web at:

**[epcounty.com/sheriff](http://epcounty.com/sheriff)**



*We Serve With Pride*



**The Only Sheriff's Office Anywhere  
To Receive the Prestigious  
CALEA TRI-ARC AWARD**